

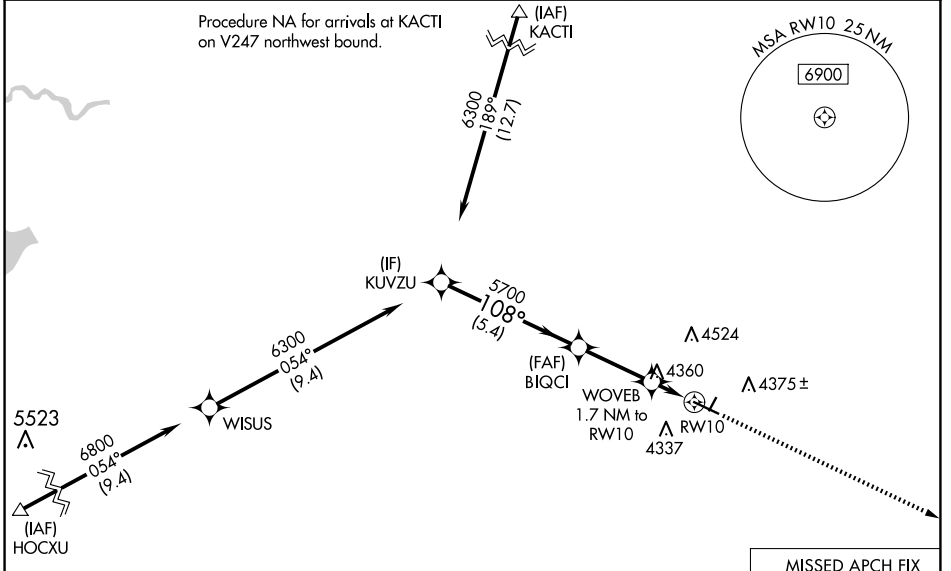
WAAS CH 61344 W10A	APP CRS 108°	Rwy Idg 5703 TDZE 4207 Apt Elev 4207
---------------------------------	------------------------	---

RNAV (GPS) RWY 10

TORRINGTON MUNI (TOR)

RNP APCH - GPS.	MISSED APPROACH: Climb to 6200 direct CIKSI and hold.
<p>▼ For uncompensated Baro-VNAV systems, LNAV/VNAV NA below -26°C or above 54°C.</p>	

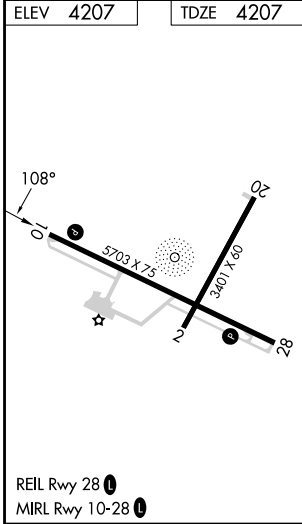
ASOS 118.375	DENVER CENTER 127.95 338.2	UNICOM 122.8 (CTAF) 0
------------------------	--------------------------------------	---------------------------------



NW-1, 17 APR 2025 to 15 MAY 2025

NW-1, 17 APR 2025 to 15 MAY 2025

ELEV 4207	TDZE 4207
-----------	-----------



KUVZU 6300	BIQCI 5700	WOVEB 1.7 NM to RWY10	RWY10	6200	CIKSI
				GP 3.00° TCH 40	
5.4 NM		2.9 NM		1.7 NM	
CATEGORY	A	B	C	D	
LPV DA	4457-1		250 (300-1)		
LNAV/VNAV DA	4468-1		261 (300-1)		
LNAV MDA	4660-1 453 (500-1)		4660-1 3/8		453 (500-1 3/8)
CIRCLING	4740-1 533 (600-1)		4880-2 673 (700-2)		4960-2 1/2 753 (800-2 1/2)