

APP CRS	Rwy Idg	<b>3999</b>
<b>001°</b>	TDZE	<b>394</b>
	Apt Elev	<b>400</b>

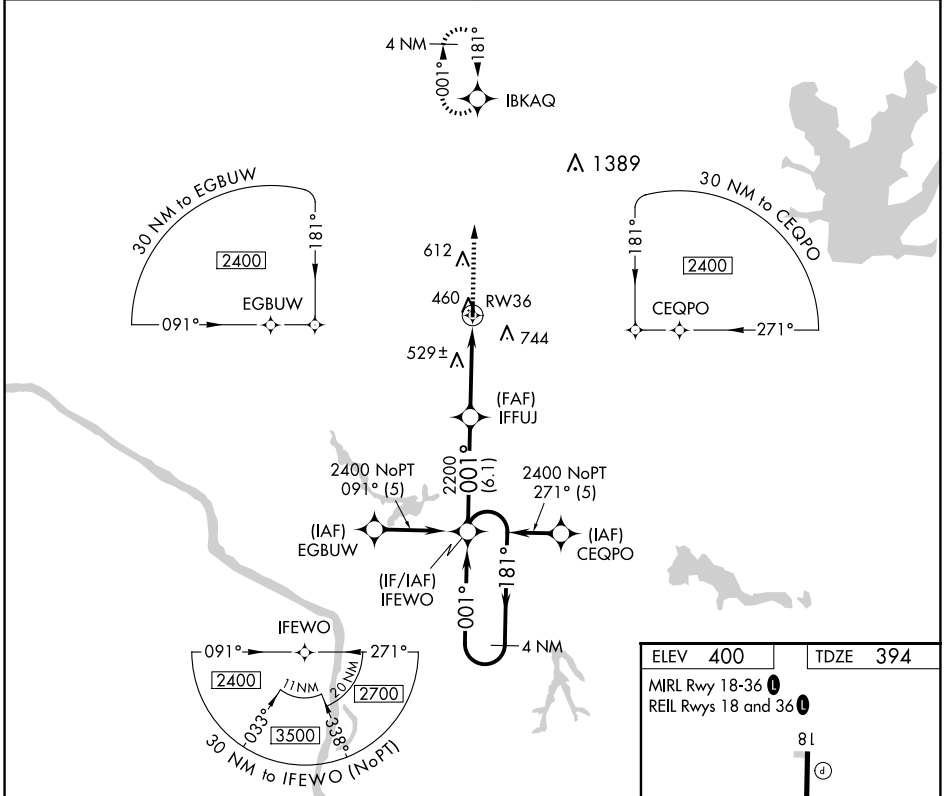
# RNAV (GPS) RWY 36

PINCKNEYVILLE/DU QUOIN (PJT)

**NA** Use Carbondale-Murphysboro altimeter setting; when not received, use Sparta Community-Hunter Fld altimeter setting and increase all MDA 40 feet and LNAV Cat C/D visibility  $\frac{1}{8}$  mile. DME/DME RNP-0.3 NA. Rwy 36 helicopter visibility reduction below  $\frac{3}{4}$  SM NA.

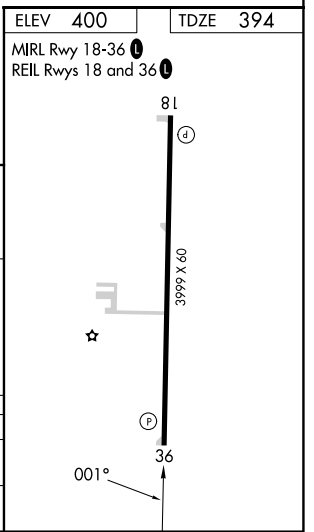
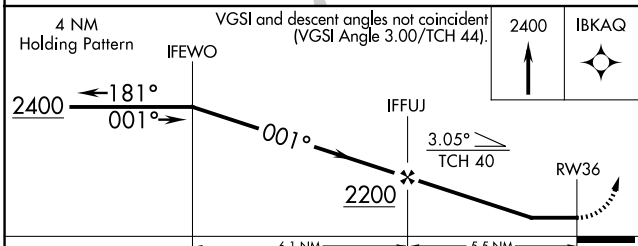
**MISSED APPROACH:** Climb to 2400 direct IBKAQ and hold

<b>KANSAS CITY CENTER</b> <b>127.475 346.275</b>	<b>UNICOM</b> <b>122.8 (CTAF) 0</b>
---	--



EC-3, 17 APR 2025 to 15 MAY 2025

EC-3, 17 APR 2025 to 15 MAY 2025



CATEGORY	A	B	C	D
LNAV MDA	820-1 426 (500-1)		820-1 $\frac{1}{4}$ 426 (500-1 $\frac{1}{4}$ )	
CIRCLING	960-1 560 (600-1)		1080-2 680 (700-2)	1080-2 $\frac{1}{4}$ 680 (700-2 $\frac{1}{4}$ )