

WAAS CH 86937 W18A	APP CRS 183°	Rwy Idg TDZE Apt Elev	5999 654 654
--	------------------------	-----------------------------	---

RNAV (GPS) RWY 18

ILLINOIS VALLEY RGNL-WALTER A DUNCAN FLD (VYS)

RNP APCH - GPS.

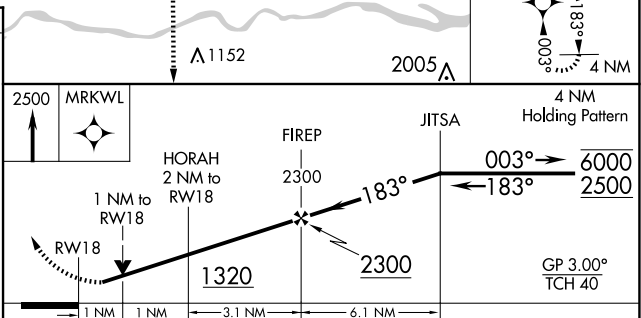
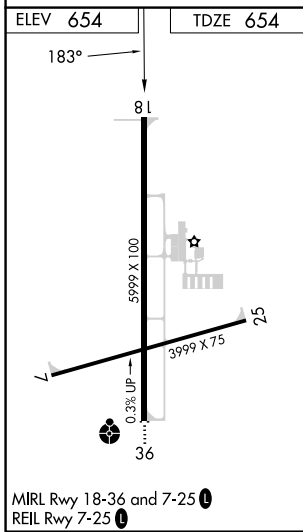
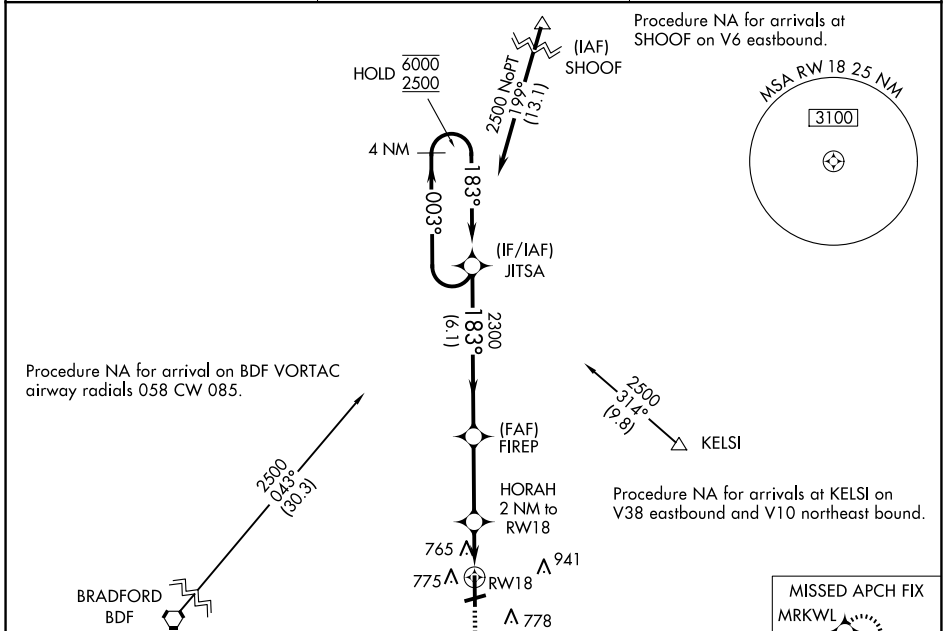
▼ Rwy 18 helicopter visibility reduction below 3/4 SM NA.
▲ For uncompensated Baro-VNAV systems, LNAV/VNAV NA below -16°C or above 54°C.

MISSED APPROACH: Climb to 2500 direct MRKWL and hold.

AWOS-3
120.025

CHICAGO CENTER
123.75 259.1

UNICOM
123.0 (CTAF) 0



CATEGORY	A	B	C	D
LPV DA		939-1	285 (300-1)	
LNAV/VNAV DA		926-1	272 (300-1)	
LNAV MDA		1020-1	366 (400-1)	
C CIRCLING	1120-1 466 (500-1)	1240-1 586 (600-1)	1260-1 3/4 606 (700-1 3/4)	1460-2 1/2 806 (900-2 1/2)

EC-3, 17 APR 2025 to 15 MAY 2025

EC-3, 17 APR 2025 to 15 MAY 2025