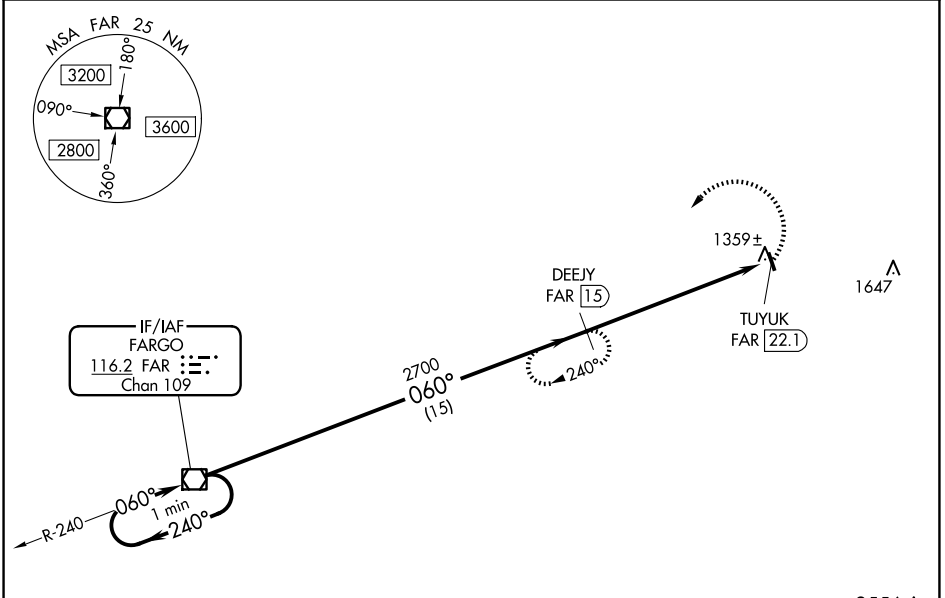


VOR/DME FAR 116.2 Chan 109	APP CRS 060°	Rwy Idg TDZE Apt Elev N/A N/A 1210
--	------------------------	--

VOR/DME-A
HAWLEY MUNI (04Y)

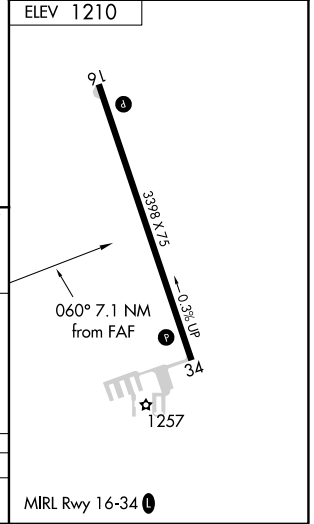
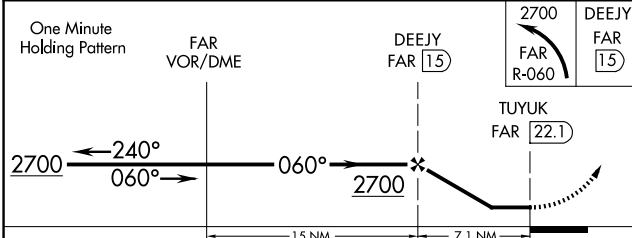
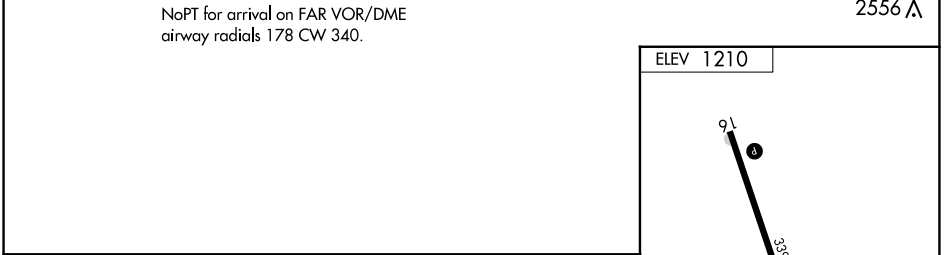
<p>▼ Use Fargo, ND altimeter setting. ▲ NA</p>	<p>MISSED APPROACH: Climbing left turn to 2700 via FAR VOR/DME R-060 to DEEJY/15 DME and hold.</p>
<p>FARGO APP CON 120.4 377.15</p>	<p>UNICOM 122.8 (CTAF)</p>



IF/IAF
FARGO
116.2 FAR
Chan **109**

NoPT for arrival on FAR VOR/DME
airway radials 178 CW 340.

2556 ▲



CATEGORY	A	B	C	D
CIRCLING	1760-1 550 (600-1)	1760-1¼ 550 (600-1¼)	1980-2¼ 770 (800-2¼)	NA

NC-1, 17 APR 2025 to 15 MAY 2025

NC-1, 17 APR 2025 to 15 MAY 2025