

WAAS CH <b>50340</b> <b>W31A</b>	APP CRS <b>309°</b>	Rwy Idg <b>3700</b> TDZE <b>79</b> Apt Elev <b>80</b>
--	------------------------	---

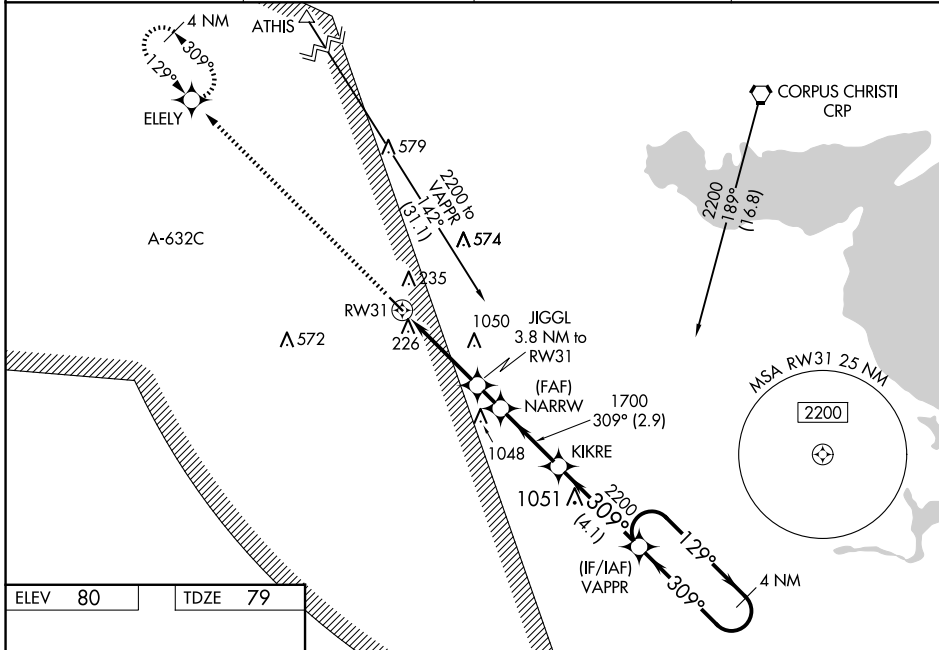
# RNAV (GPS) RWY 31

NUECES COUNTY (R.B.O)

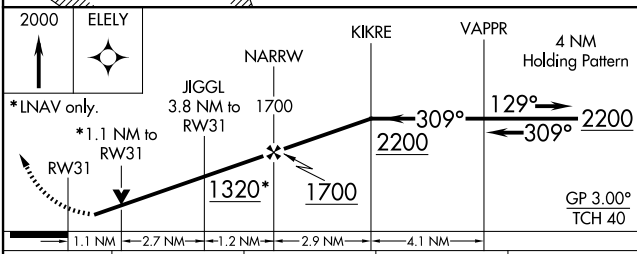
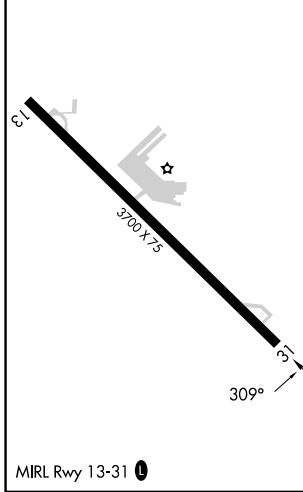
**⚠** For uncompensated Baro-VNAV systems, LNAV/VNAV NA below -15°C (5°F) or above 54°C (130°F). Circling NA northeast of Rwy 13-31. Baro-VNAV and VDP NA when using Corpus Christi Intl altimeter setting. Rwy 31 helicopter visibility reduction below 3/4 SM NA. DME/DME RNP-0.3 NA. Procedure NA at night. When local altimeter not received, use Corpus Christi Intl altimeter setting and increase LPV DA to 357 feet, LNAV/VNAV DA to 398 feet and all MDA 40 feet, increase LNAV/VNAV all Cats visibility 1/8 SM.

MISSED APPROACH: Climb to 2000 direct ELEY and hold.

AWOS-3 <b>118.175</b>	KINGSVILLE APP CON * <b>119.9 290.45</b>	CTAF <b>122.9</b>	<b>122.8</b> <b>0</b>
--------------------------	---	----------------------	-----------------------



ELEV 80	TDZE 79
---------	---------



CATEGORY	A	B	C	D
LPV DA	329-1	250 (300-1)		NA
LNAV/VNAV DA	370-1	291 (300-1)		NA
LNAV MDA	480-1	401 (400-1)		NA
<b>C</b> CIRCLING	540-1	460 (500-1)		NA

SC-3, 17 APR 2025 to 15 MAY 2025

SC-3, 17 APR 2025 to 15 MAY 2025