

| | | | |
|--|------------------------|-----------------------------|---|
| WAAS CH 97634 W19A | APP CRS 194° | Rwy Idg TDZE Apt Elev | 5507 497 497 |
|--|------------------------|-----------------------------|---|

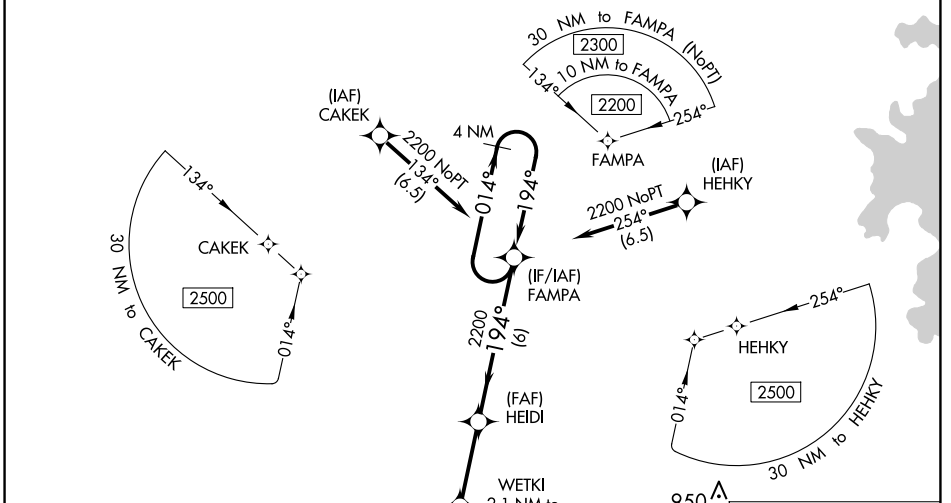
RNAV (GPS) RWY 19

CARROLL COUNTY (HZD)

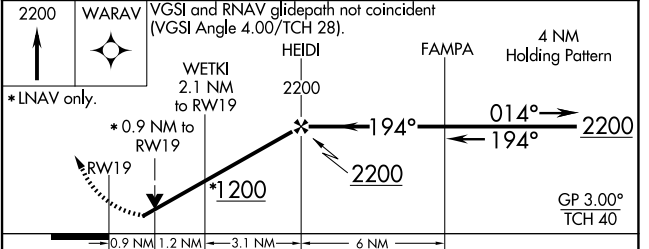
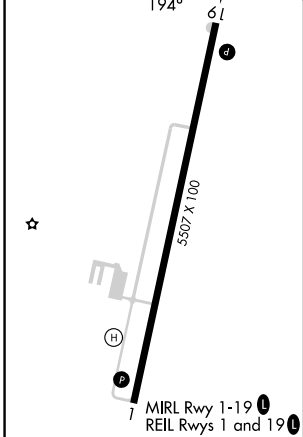
⚠ NA For uncompensated Baro-VNAV systems, LNAV/VNAV NA below -15°C (5°F) or above 54°C (130°F). DME/DME RNP-0.3 NA. When local altimeter setting not received, use Jackson Rgnl altimeter setting and increase all DA 94 feet and all MDA 100 feet; increase LPV all Cats and LNAV/VNAV all Cats visibility 3/8 mile, LNAV Cats C and D visibility 1/4 mile, and Circling Cats C and D visibility 1/2 mile. VDP and Baro-VNAV NA with Jackson Rgnl altimeter setting. Helicopter visibility reduction below 3/4 SM NA.

MISSED APPROACH:
Climb to 2200 direct
WARAV and hold.

| | | |
|--------------------------|--|---------------------------------|
| AWOS-3 133.275 | MEMPHIS CENTER 134.65 316.15 | UNICOM 122.8 (CTAF) 0 |
|--------------------------|--|---------------------------------|



| | |
|----------|----------|
| ELEV 497 | TDZE 497 |
|----------|----------|



| CATEGORY | A | B | C | D |
|-------------------|--------|-------------|-----------------------|-------------------------|
| LPV DA | 798-1 | | 301 (400-1) | |
| LNAV/VNAV DA | 933-1½ | | 436 (500-1½) | |
| LNAV MDA | 920-1 | 423 (500-1) | 920-1¼ | 423 (500-1¼) |
| C CIRCLING | 980-1 | 483 (500-1) | 1220-2 723 (800-2) | 1220-2¼ 723 (800-2¼) |