

RNAV (GPS) RWY 9

APCH CRS	Rwy Idg	3696
109°	TDZE	6168
	Arpt Elev	6190

AL-17449 [USA]

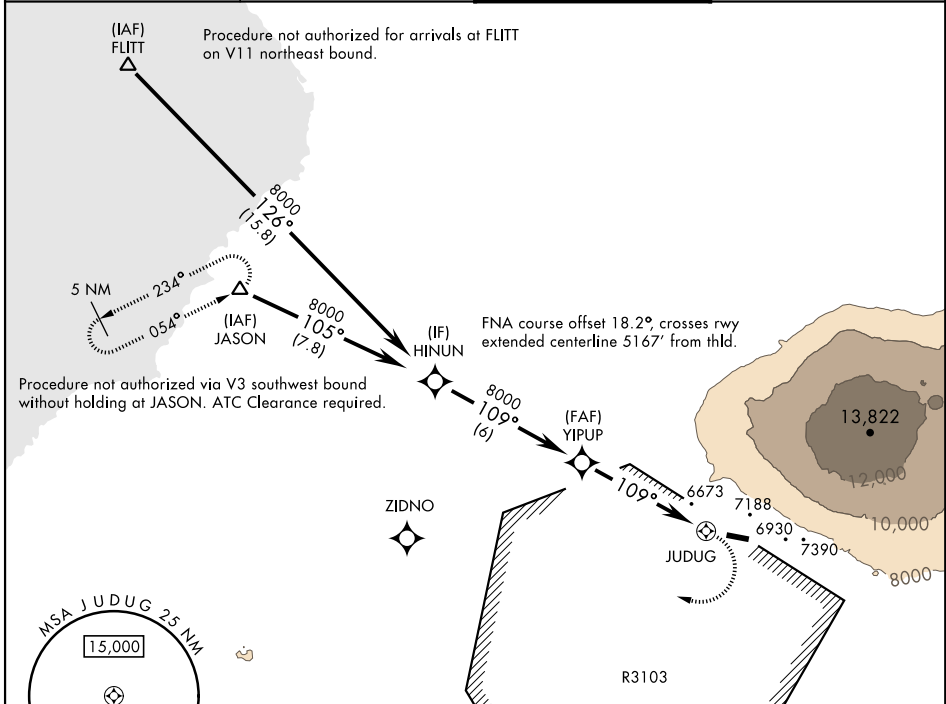
BRADSHAW AAF (PHSF)

RNP APCH - GFS

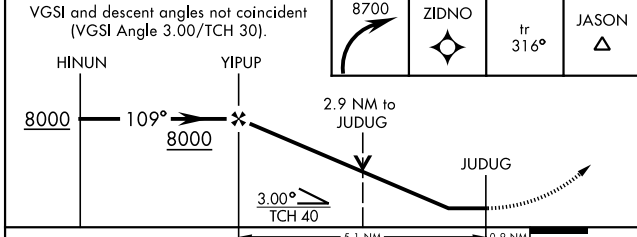
- ▼ * Circling not authorized at night.
- * Circling not authorized N of Rwy 09-27.
- ▲NA Helicopter visibility reduction below ¾ SM not authorized.

MISSED APPROACH: Climbing right turn to 8700 direct ZIDNO and on track 316° to JASON and hold.

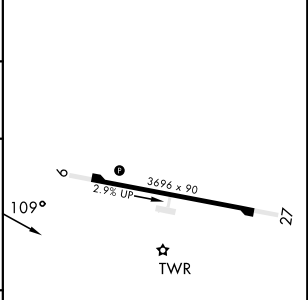
ATIS ★ 124.7 293.225	HONOLULU CENTER ★ 118.45 278.3	TOWER ★ 119.275 (CTAF) 236.6	GND CON ★ 121.7 0 226.675
--------------------------------	--	--	-------------------------------------



VGSI and descent angles not coincident (VGSI Angle 3.00/TCH 30).	8700	ZIDNO	tr 316°	JASON
--	------	-------	---------	-------



ELEV 6190	TDZE 6168
-----------	-----------



CATEGORY	A	B	C	D
LNAV MDA	7300-1¼ 1132 (1200-1¼)	7300-1½ 1132 (1200-1½)	7300-3 1132 (1200-3)	NOT AUTHORIZED
CIRCLING*	7300-1¼ 1110 (1200-1¼)	7700-1½ 1510 (1600-1½)	NOT AUTHORIZED	

MIRL Rwy 09-27

RNAV (GPS) RWY 9

PAC, 17 APR 2025 to 12 JUN 2025

PAC, 17 APR 2025 to 12 JUN 2025