

APP CRS	Rwy Idg	2697
320°	TDZE	763
	Apt Elev	763

RNAV (GPS) RWY 32

EPHRAIM/GIBRALTAR (3D2)

RNP APCH - GPS.

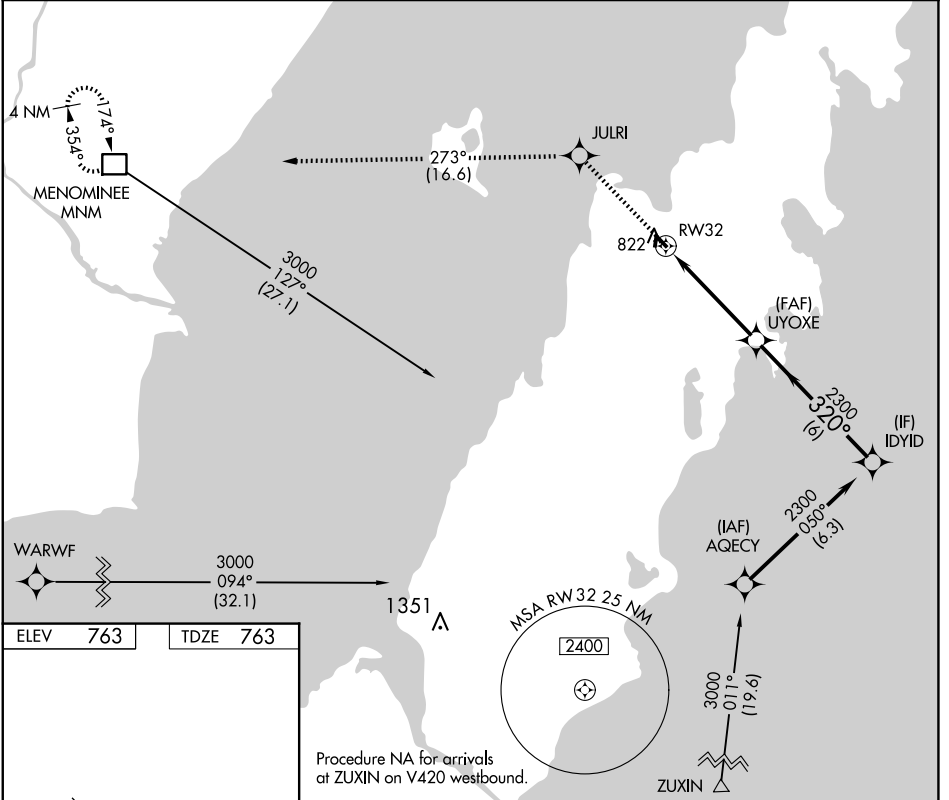
MISSED APPROACH: Climb to 3000 direct JULRI and on track 273° to MNM DME and hold.

Procedure NA at night. Rwy 32 helicopter visibility reduction below 3/4 SM NA.

AWOS-3PT
124.175

GREEN BAY APP CON★
120.3 338.2

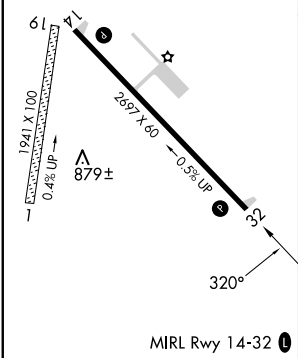
UNICOM
123.0 (CTAF) 0



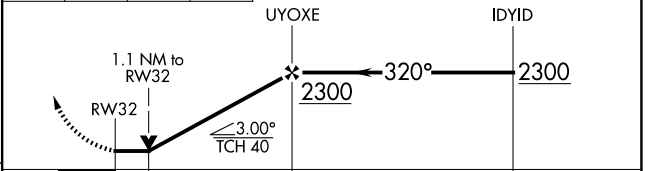
ELEV	763	TDZE	763
------	------------	------	------------

Procedure NA for arrivals at ZUXIN on V420 westbound.

VGSI and descent angles not coincident (VGSI Angle 3.00/TCH 25).



3000	JULRI	tr 273°	MNM	VGSI and descent angles not coincident (VGSI Angle 3.00/TCH 25).



CATEGORY	A	B	C	D
LNAV MDA	1120-1	357 (400-1)		NA

EC-3, 17 APR 2025 to 15 MAY 2025

EC-3, 17 APR 2025 to 15 MAY 2025