

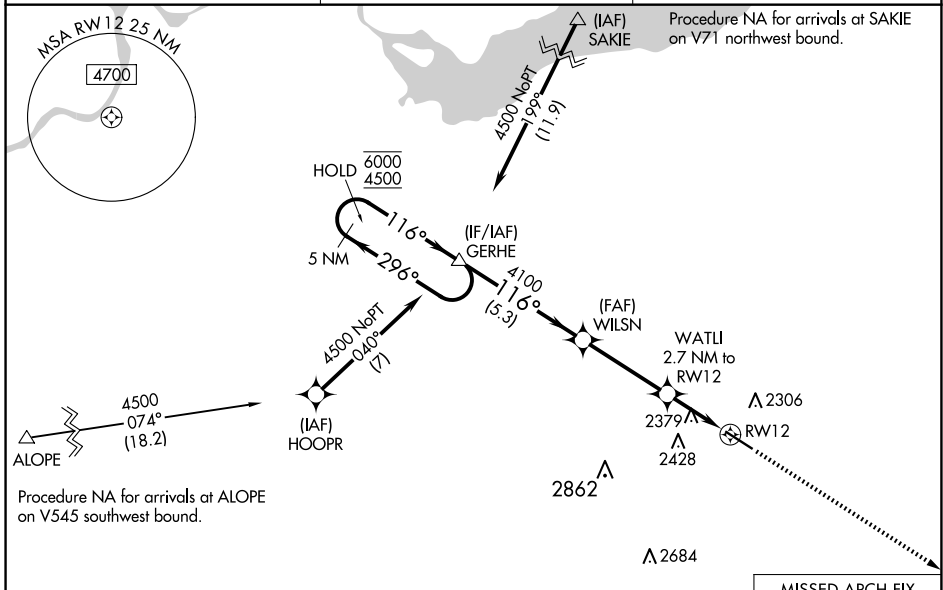
WAAS CH 70717 W12A	APP CRS 116°	Rwy Idg TDZE Apt Elev	5500 2114 2135
--	------------------------	-----------------------------	---

RNAV (GPS) RWY 12

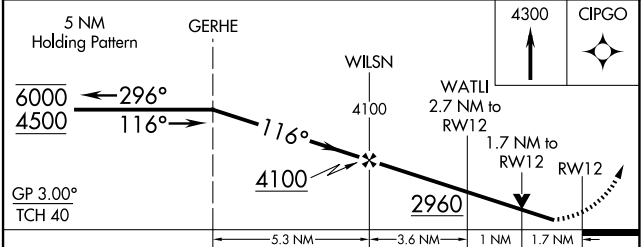
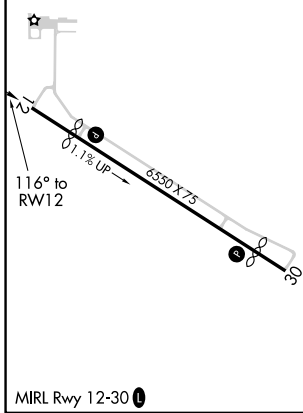
WATFORD CITY MUNI (S25)

RNP APCH-GPS.		MISSED APPROACH: Climb to 4300 direct CIPGO and hold.
<p>NA Rwy 12 helicopter visibility reduction below 3/4 SM NA. When local altimeter setting not received, use Williston altimeter setting and increase LPV DA to 2474 feet; increase all MDAs 120 feet and LNAV visibility Cat C/D 3/8 SM, and Circling visibility Cat C/D 1/2 SM.</p>		

AWOS-3PT 118.125	SALT LAKE CENTER 126.85 305.2	UNICOM 122.8 (CTAF)
----------------------------	---	-------------------------------



ELEV 2135	D	TDZE 2114
-----------	----------	-----------



CATEGORY	A	B	C	D
LPV DA	2364-1 250 (300-1)			
LNAV MDA	2640-1	526 (600-1)	2640-1½	526 (600-1½)
C CIRCLING	2700-1 565 (600-1)	2760-1 625 (700-1)	2760-1¾ 625 (700-1¾)	2960-2¾ 825 (900-2¾)

NC-1, 17 APR 2025 to 15 MAY 2025

NC-1, 17 APR 2025 to 15 MAY 2025