

APP CRS	Rwy Idg	2289
059°	TDZE	118
	Apt Elev	118

RNAV (GPS) RWY 6

POTOMAC AIRFIELD (VKK)

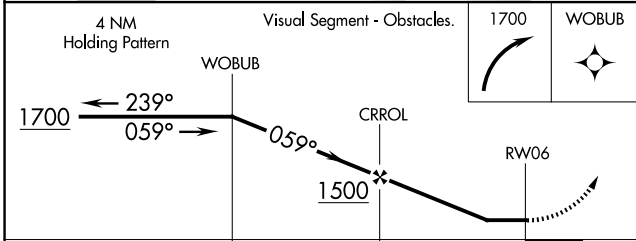
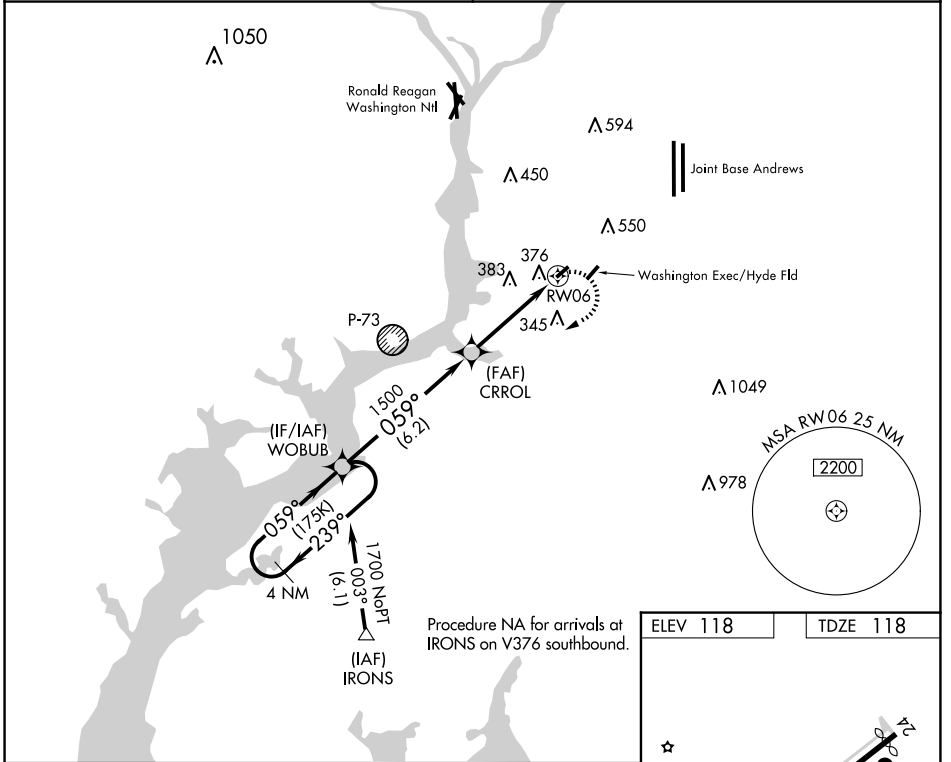
RNP APCH - GPS.

▽ Circling NA SE of Rwy 6-24. Circling Rwy 24 NA at night. If local altimeter setting not received, use Joint Base Andrews altimeter setting and increase all MDAs 40 feet. Rwy 6 helicopter visibility reduction below 1 SM NA.

△ NA

MISSED APPROACH: Climbing right turn to 1700 direct WOBUB and hold.

POTOMAC APP CON 124.7 338.2	UNICOM 122.8 (CTAF) 0
---------------------------------------	---------------------------------



ELEV 118	TDZE 118
----------	----------

MIRL Rwy 6-24 0
REIL Rwy 6 and 24

CATEGORY	A	B	C	D
RNAV MDA	680-1 562 (600-1)		NA	
CIRCLING	740-1 622 (700-1)		NA	

NE-3, 17 APR 2025 to 15 MAY 2025

NE-3, 17 APR 2025 to 15 MAY 2025