

VOR/DME BAE <b>116.4</b> Chan 111	APP CRS <b>247°</b>	Rwy Idg TDZE Apt Elev <b>800</b>	N/A N/A 800
---	------------------------	--	-------------------

# VOR-A

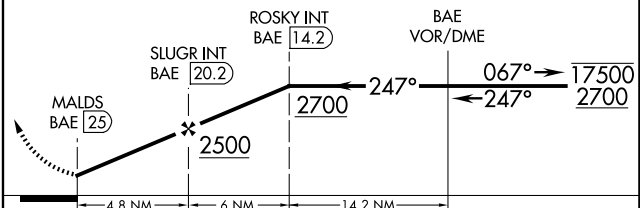
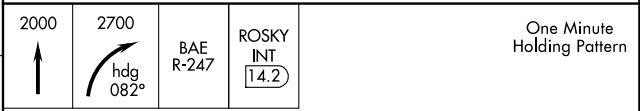
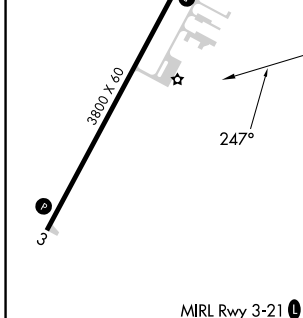
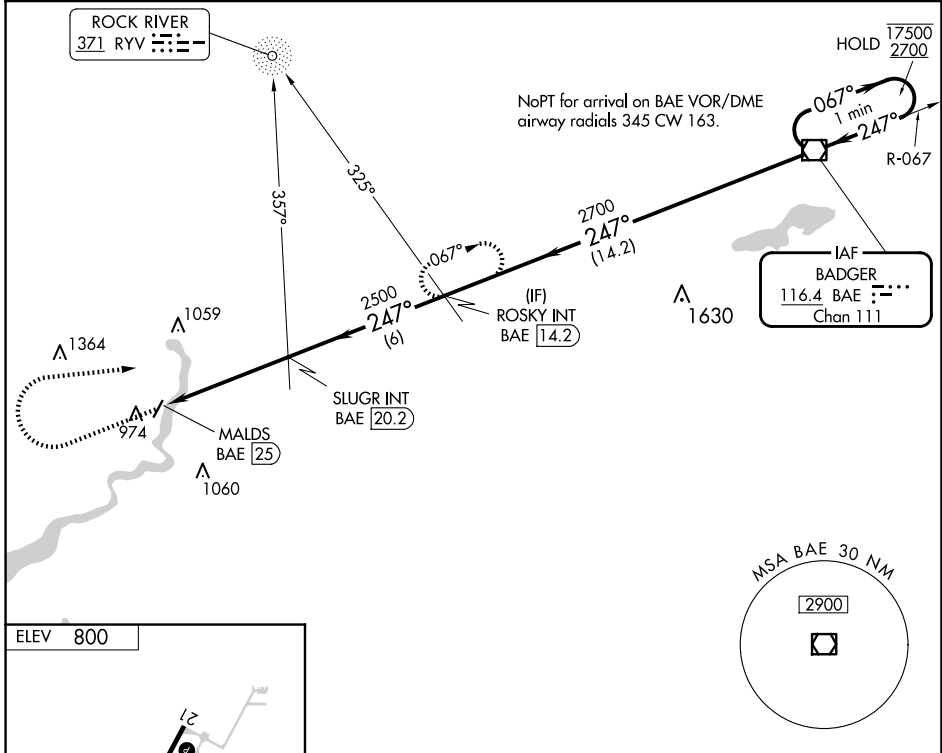
FORT ATKINSON MUNI (61C)

ADF or DME required.

**▼** Circling to Rwy 3 NA at night. Rwy 3 helicopter visibility reduction below 1 SM NA. Use Watertown altimeter setting.

MISSED APPROACH: Climb to 2000 then climbing right turn to 2700 on heading 082° and on BAE VOR/DME R-247 to ROSKY INT/BAE 14.2 DME and hold.

Ryv AWOS-3 <b>119.975</b>	MADISON APP CON * <b>120.1 350.3</b>	CTAF <b>122.9</b>
------------------------------	---	----------------------



FAF to MAP 4.8 NM					CATEGORY	A	B	C	D	
Knots	60	90	120	150	180	1440-1	640 (700-1)	1460-1 <sup>3</sup> / <sub>4</sub>	660 (700-1 <sup>3</sup> / <sub>4</sub> )	NA
Min:Sec	4:48	3:12	2:24	1:55	1:36	<b>☑</b> CIRCLING				

EC-3, 17 APR 2025 to 15 MAY 2025

EC-3, 17 APR 2025 to 15 MAY 2025