

WAAS CH 57938 W35A	APP CRS 346°	Rwy Idg TDZE 538 Apt Elev 538	3651 538 538
--	------------------------	---	---

RNAV (GPS) RWY 35

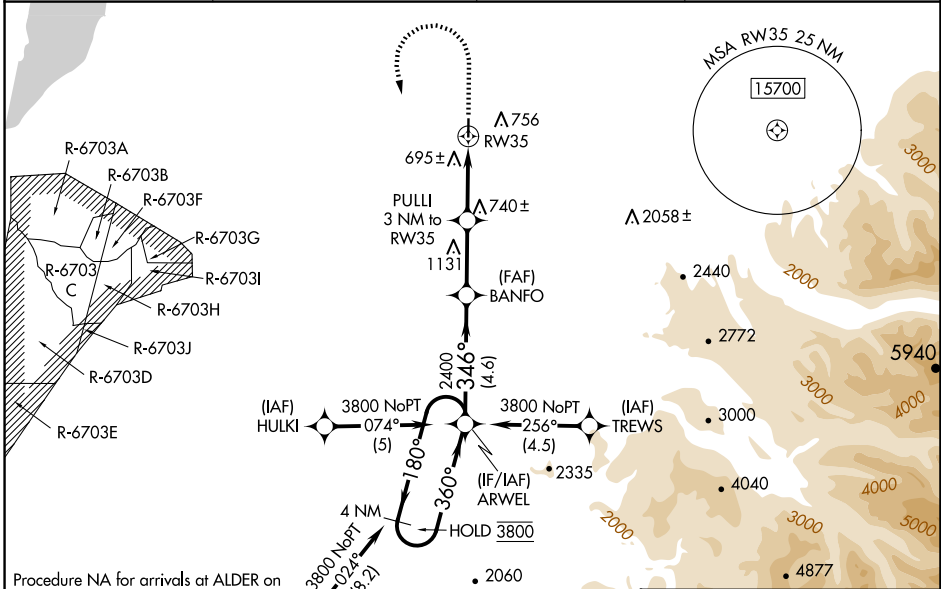
PIERCE COUNTY/THUN FLD (PLU)

RNP APCH - GPS.

⚠ For uncompensated Baro-VNAV systems, LNAV/VNAV NA below -16°C or above 54°C. Baro-VNAV and VDP NA when using TCM altimeter setting. Rwy 35 helicopter visibility reduction below 3/4 SM NA. When local altimeter setting not received, use TCM altimeter setting and increase LPV DA to 960 feet and all visibilities 1/4 SM; increase LNAV/VNAV DA to 1049 feet; increase all MDAs 60 feet.

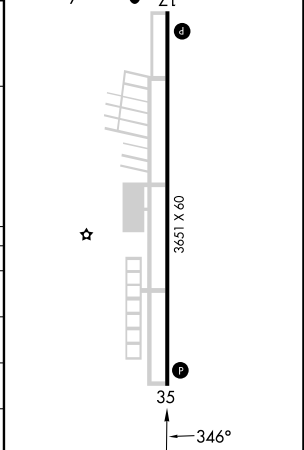
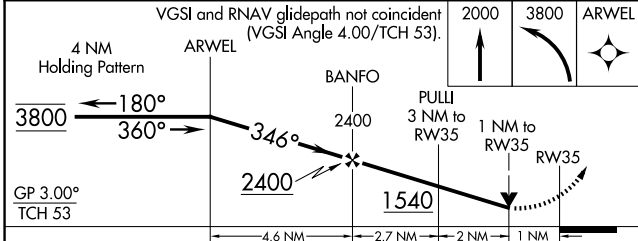
MISSED APPROACH: Climb to 2000 then climbing left turn to 3800 direct ARWEL and hold.

AWOS-3 128.575	SEATTLE APP CON 126.5 377.15	CLNC DEL 121.85	UNICOM 122.7 (CTAF) 0
--------------------------	--	---------------------------	---------------------------------



Procedure NA for arrivals at ALDER on V495 southbound and V204 westbound.

ELEV 538	TDZE 538
REIL Rwy 17 and 35	MIRL Rwy 17-35



CATEGORY	A	B	C	D
LPV DA	911-1	373 (400-1)		NA
LNAV/VNAV DA	1000-1 3/8	462 (500-1 1/2)		NA
LNAV MDA	1000-1	462 (500-1)		NA
CIRCLING	1080-1	542 (600-1)		NA

NW-1, 17 APR 2025 to 15 MAY 2025

NW-1, 17 APR 2025 to 15 MAY 2025