

VORTAC TUL 114.4 Chan 91	APP CRS 060°	Rwy Idg TDZE Apt Elev	N/A N/A 733
--	------------------------	-----------------------------	--

VOR/DME-B

CLAREMORE RGNL (GCM)

▽ If local altimeter setting not received, use Tulsa Intl altimeter setting and increase all MDAs 60 feet.

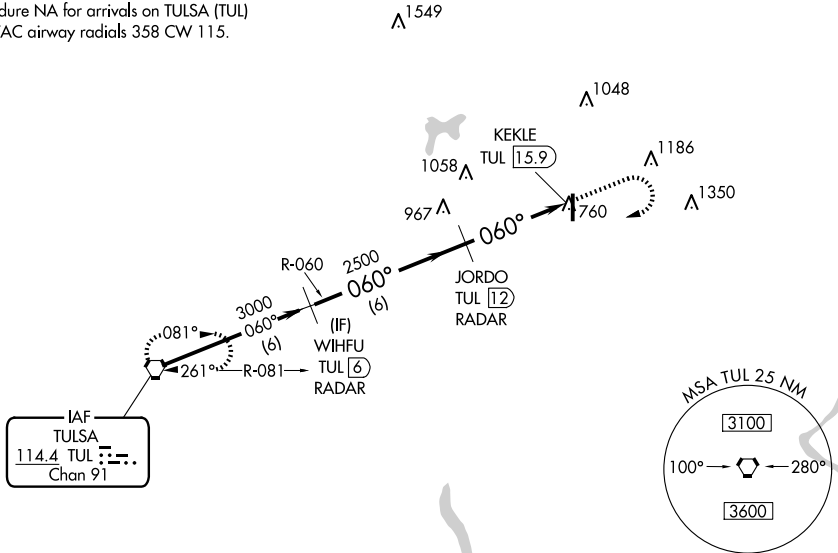
MISSED APPROACH: Climb to 2500 then climbing right turn to 3000 direct TUL VORTAC and hold.

AWOS-3PT
119.925

TULSA APP CON
119.1 360.825

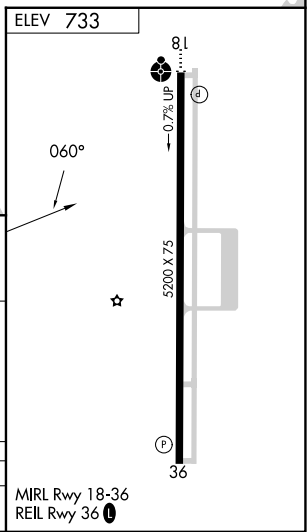
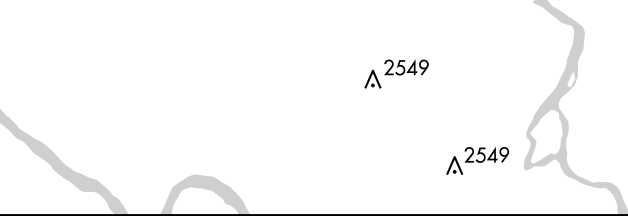
UNICOM
122.7 (CTAF) ①

Procedure NA for arrivals on TULSA (TUL)
VORTAC airway radials 358 CW 115.



SC-1, 17 APR 2025 to 15 MAY 2025

SC-1, 17 APR 2025 to 15 MAY 2025



Procedure Turn NA	WIHFU TUL (6) RADAR	JORDO TUL (12) RADAR	KEKLE TUL (15.9)	TUL (6) RADAR
	2500	3000	TUL	
CATEGORY	A	B	C	D
① CIRCLING	1260-1	527 (600-1)	1380-1¾ 647 (700-1¾)	NA