

WAAS CH <b>86708</b> <b>W06A</b>	APP CRS <b>060°</b>	Rwy Idg TDZE Apt Elev	<b>5000</b> <b>657</b> <b>666</b>
----------------------------------------	------------------------	-----------------------------	-----------------------------------------

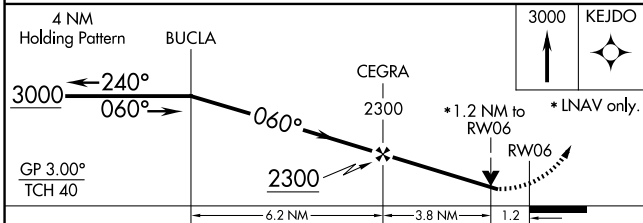
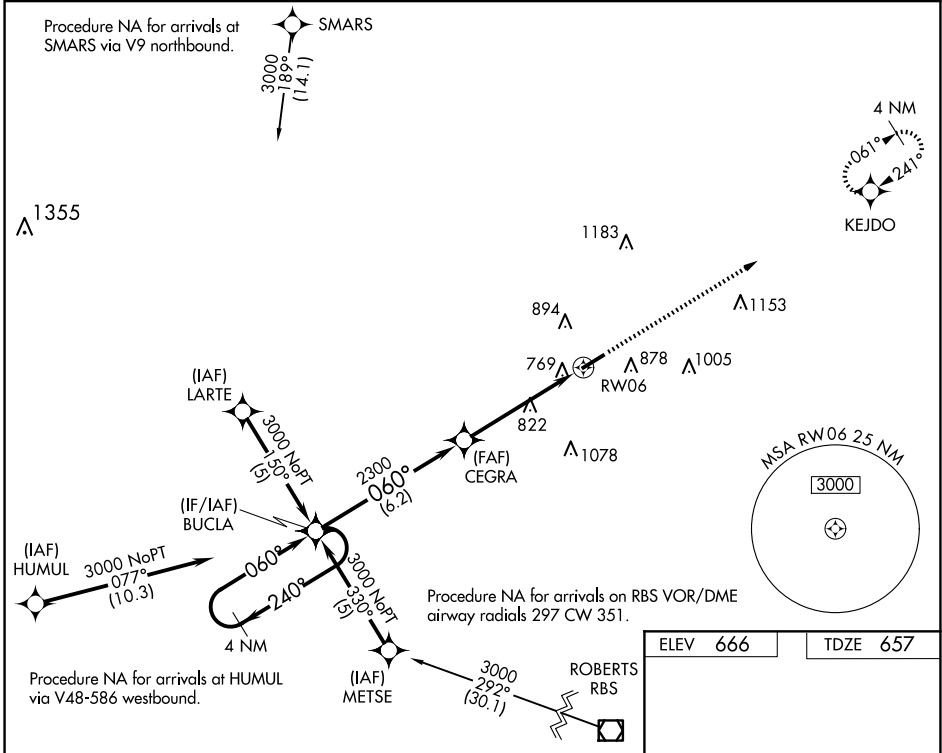
# RNAV (GPS) RWY 6

PONTIAC MUNI (PNT)

**⚠** DME/DME RNP-0.3 NA. For uncompensated Baro-VNAV systems, LNAV/VNAV NA below -16°C (4°F) or above 54°C (130°F). Baro-VNAV and VDP NA when using Bloomington/Normal altimeter setting. When local altimeter setting not received, use Bloomington/Normal altimeter setting: increase LPV DA to 1138 feet and all visibilities ¼ SM; increase LNAV/VNAV DA to 1339 feet and all visibilities 1 SM; increase all MDAs 100 feet and Circling Cat C visibility ½ SM. Visibility reduction by helicopters NA.

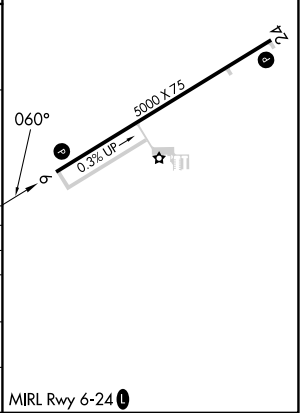
**MISSED APPROACH:** Climb to 3000 direct KEJDO and hold.

AWOS-3 <b>119.675</b>	CHICAGO CENTER <b>123.75 259.1</b>	UNICOM <b>123.075 (CTAF) 0</b>
--------------------------	---------------------------------------	-----------------------------------



CATEGORY	A	B	C	D
LPV DA	1040-1½	383 (400-1½)		NA
LNAV/VNAV DA	1071-1½	414 (500-1½)		NA
LNAV MDA	1080-1	423 (500-1)	1080-1¼ 423 (500-1¼)	NA
CIRCLING	1180-1 514 (600-1)	1200-1 534 (600-1)	1320-1¾ 654 (700-1¾)	NA

ELEV 666	TDZE 657
----------	----------



EC-3, 17 APR 2025 to 15 MAY 2025

EC-3, 17 APR 2025 to 15 MAY 2025