

APP CRS	Rwy Idg	<b>3181</b>
<b>109°</b>	TDZE	<b>998</b>
	Apt Elev	<b>1003</b>

# RNAV (GPS) RWY 12

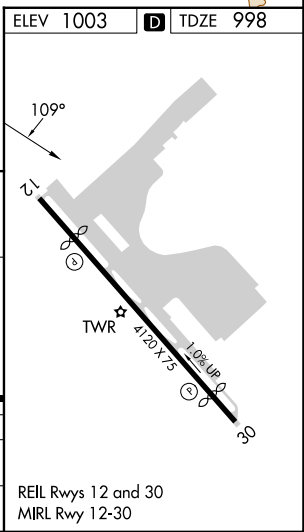
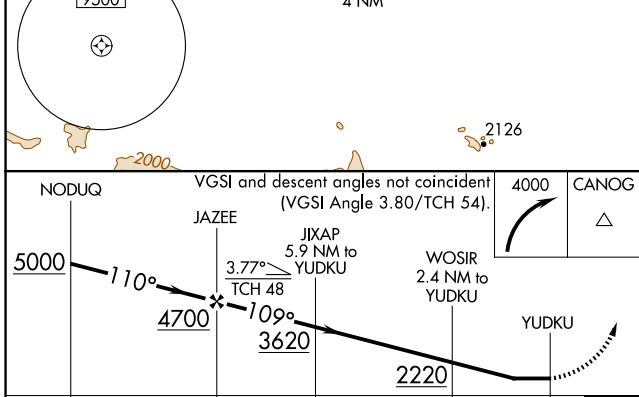
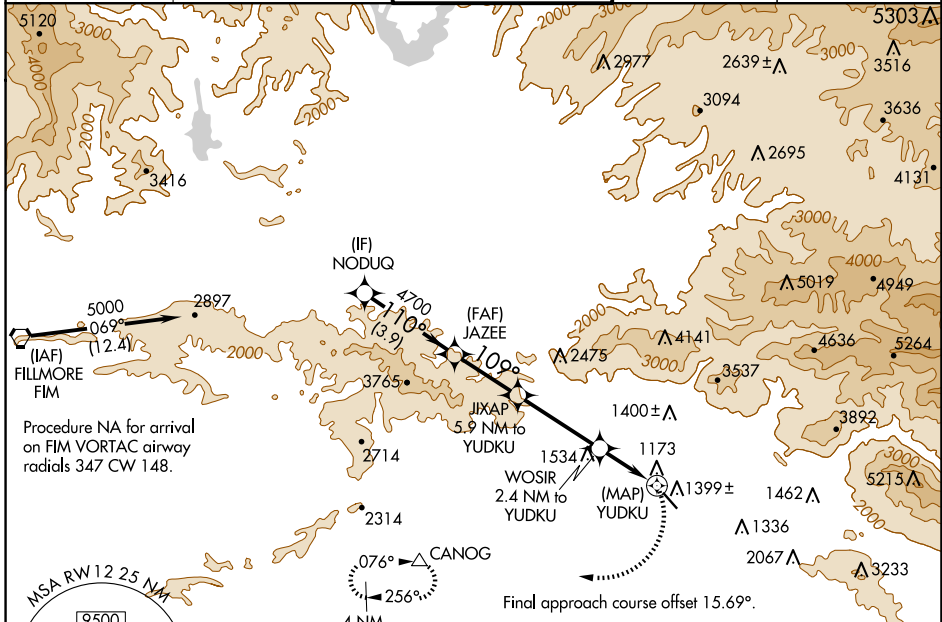
WHITEMAN (WHP)

RNP APCH.

**NA** Procedure NA at night. When local altimeter setting not received, use Burbank altimeter setting. Rwy 12 helicopter visibility reduction below 1 SM NA.

MISSED APPROACH: Climbing right turn to 4000 direct CANOG and hold.

ATIS <b>132.1</b>	SOCAL APP CON <b>120.4 360.6 (NORTH)</b> <b>134.2 338.2 (WEST)</b>	WHITEMAN TOWER ★ <b>135.0 (CTAF)</b>	GND CON <b>125.0</b>	UNICOM <b>122.95</b>
----------------------	--	---	-------------------------	-------------------------



CATEGORY	A	B	C	D
LNVA MDA	1660-1	662 (700-1)	1660-1 $\frac{1}{8}$ 662 (700-1 $\frac{1}{8}$ )	NA
CIRCLING	1700-1 697 (700-1)	1860-1 $\frac{1}{4}$ 857 (900-1 $\frac{1}{4}$ )	2200-3 1197 (1200-3)	NA

REIL Rwy 12 and 30  
MIRL Rwy 12-30

SW-3, 17 APR 2025 to 15 MAY 2025

SW-3, 17 APR 2025 to 15 MAY 2025