

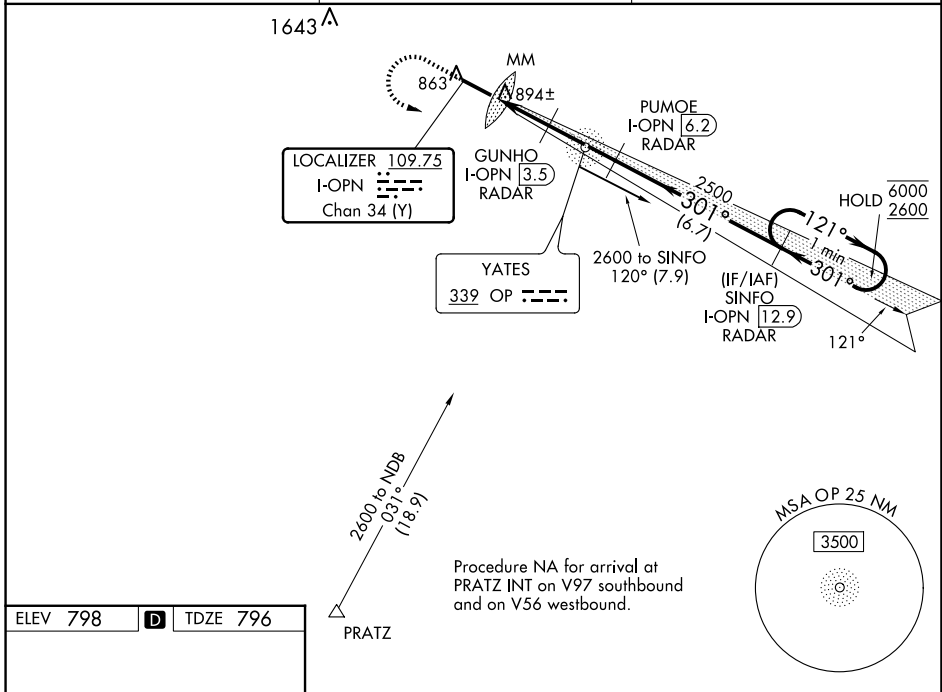
LOC/DME I-OPN <b>109.75</b> Chan <b>34</b> (Y)	APP CRS <b>301°</b>	Rwy Idg <b>4962</b> TDZE <b>796</b> Apt Elev <b>798</b>
--	------------------------	---

# ILS or LOC RWY 30

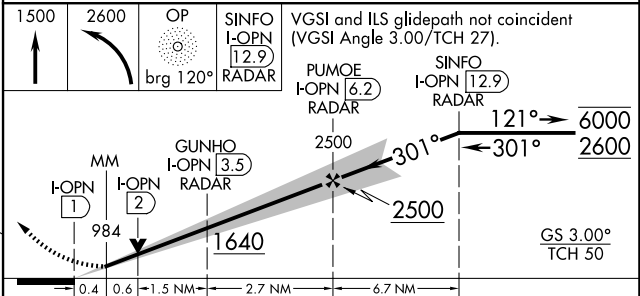
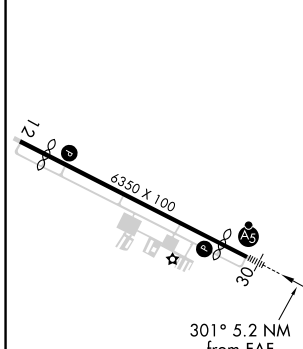
THOMASTON-UPSON COUNTY (OPN)

ADF required for procedure entry. DME or RADAR required.	MALSR 	MISSED APPROACH: Climb to 1500 then climbing left turn to 2600 direct OP NDB and brg 120° to SINFO/I-OPN 12.9 DME/RADAR and hold.
For inop ALS, increase S-LOC 30 Cats C, D visibility to 1 SM.		

AWOS-3 <b>133.975</b>	ATLANTA APP CON ★ <b>124.2 279.6</b>	UNICOM <b>122.8</b> (CTAF) <b>0</b>
--------------------------	---	--



ELEV 798	<b>D</b>	TDZE 796
----------	----------	----------



CATEGORY	A	B	C	D
S-ILS 30	996-1/2 200 (200-1/2)			
S-LOC 30	1160-1/2	364 (400-1/2)	1160-5/8	364 (400-3/8)
CIRCLING	1220-1 422 (500-1)	1260-1 462 (500-1)	1260-1 1/2 462 (500-1 1/2)	1680-3 882 (900-3)

MIRL Rwy 12-30 <b>0</b>					
FAF to MAP 5.2 NM					
Knots	60	90	120	150	180
Min:Sec	5:12	3:28	2:36	2:05	1:44

SE-4, 17 APR 2025 to 15 MAY 2025

SE-4, 17 APR 2025 to 15 MAY 2025