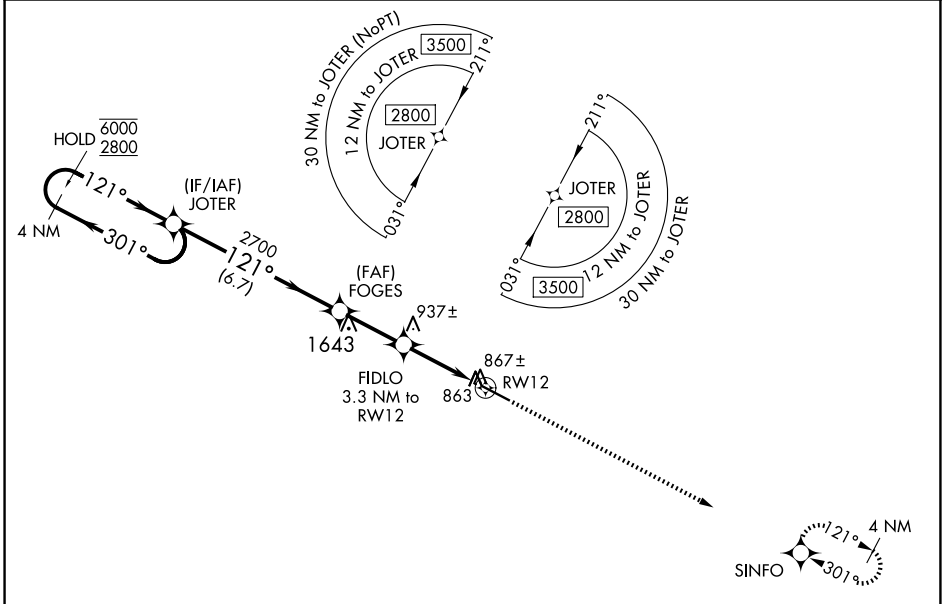


WAAS CH 63115 W12A	APP CRS 121°	Rwy Idg TDZE 791 Apt Elev 798	5525 791 798
--	------------------------	---	---

RNAV (GPS) RWY 12

THOMASTON-UPSON COUNTY (OPN)

RNP APCH-GPS.		
<p>T Rwy 12 helicopter visibility reduction below 3/4 SM NA. For uncompensated Baro-VNAV systems, LNAV/VNAV NA below -16°C or above 54°C.</p>		
AWOS-3 133.975	ATLANTA APP CON ★ 124.2 279.6	UNICOM 122.8 (CTAF) ①



ELEV 798	D	TDZE 791
----------	----------	----------

4 NM Holding Pattern		JOTER		VGSi and RNAV glidepath not coincident (VGSi Angle 3.50/TCH 32).		2600	SINFO
6000 ← 301°		2800 → 121°		2700		↑	✧
GP 3.00°		TCH 40		FOGES		121° to RWY 12	
		2700		FIDLO		0.8 NM to RWY 12	
		6.7 NM		2.6 NM		RWY 12	
		1860		2.5		0.8	
CATEGORY	A	B	C	D			
LPV DA		1041-3/4	250 (300-3/4)				
LNAV/VNAV MDA		1041-3/4	250 (300-3/4)				
LNAV MDA		1120-1	329 (400-1)				
CIRCLING	1220-1 422 (500-1)	1260-1 462 (500-1)	1260-1 1/2 462 (500-1 1/2)	1680-3 882 (900-3)			

