

WAAS Chan <b>99700</b> <b>W36A</b>	APP CRS <b>357°</b>	Rwy ldg <b>5002</b> TDZE <b>86</b> Apr Elev <b>86</b>
--	------------------------	---

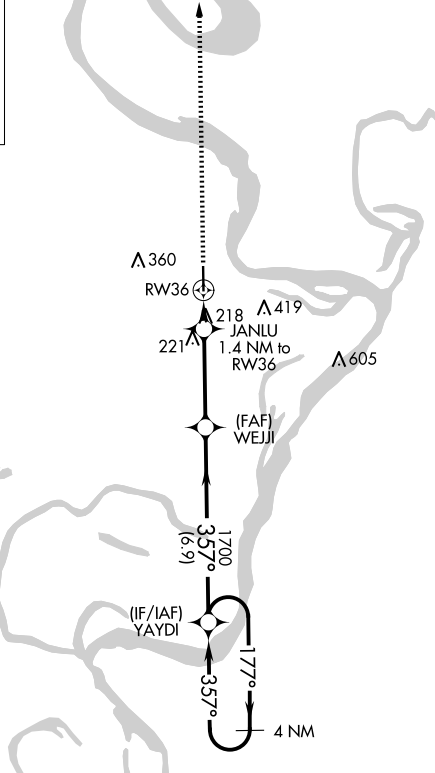
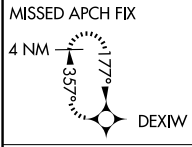
# RNAV (GPS) RWY 36

VICKSBURG TALLULAH RGNL (TVR)

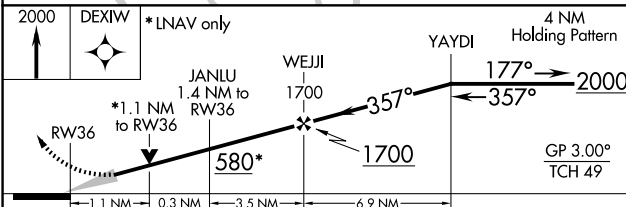
**⚠** For uncompensated Baro-VNAV systems, LNAV/VNAV NA below -8°C (18°F) or above 54°C (130°F). DME/DME RNP-0.3 NA. When local altimeter setting not received, use Vicksburg Muni, MS altimeter setting and increase LPV DA to 309 feet, LNAV/VNAV DA to 516 feet all visibilities 1/8 mile; increase all MDA 40 feet and visibility Cats C/D 1/4 mile. Baro-VNAV and VDP NA with Vicksburg Muni, MS altimeter setting.

SSALR 	MISSED APPROACH: Climb to 2000 direct DEXIW and hold.
-----------	--

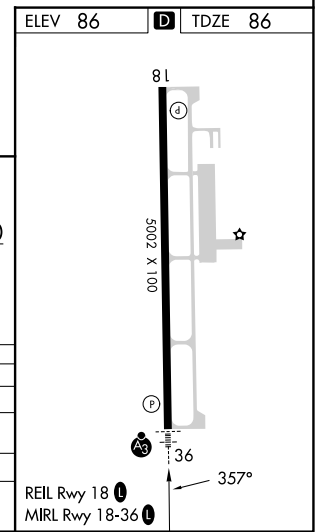
ASOS <b>118.525</b>	MEMPHIS CENTER <b>132.5 259.1</b>	UNICOM <b>123.0 (CTAF) 0</b>
------------------------	--------------------------------------	---------------------------------



3000  
087° ← → 267°  
YAYDI  
2000  
087° ← → 267°  
24 NM to YAYDI  
3000  
30 NM to YAYDI (NoPT)



CATEGORY	A	B	C	D
LPV DA		286-1/2	200 (200-1/2)	
LNAV/VNAV DA		493-7/8	407 (500-7/8)	
LNAV MDA	480-1/2	394 (400-1/2)	480-5/8	394 (400-5/8)
<b>C</b> CIRCLING	540-1	454 (500-1)	720-1 3/4 634 (700-1 3/4)	720-2 634 (700-2)



SC-4, 17 APR 2025 to 15 MAY 2025

SC-4, 17 APR 2025 to 15 MAY 2025