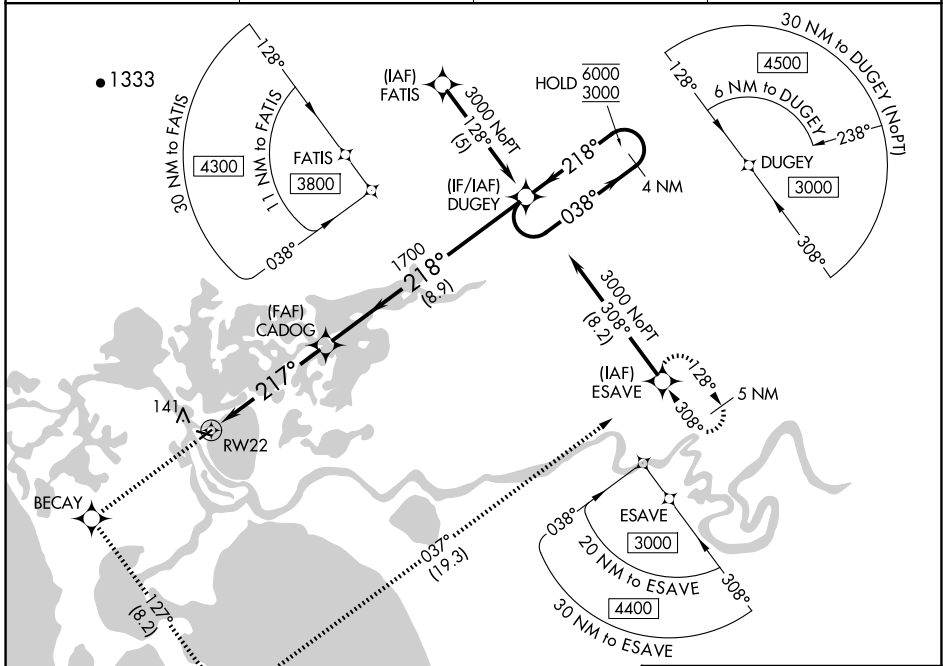


WAAS CH 40404 W22A	APP CRS 217°	Rwy Idg TDZE Apt Elev	3002 17 17
--	------------------------	-----------------------------	---------------------------------------

RNAV (GPS) Z RWY 22

SELAWIK (WLK) (PASK)

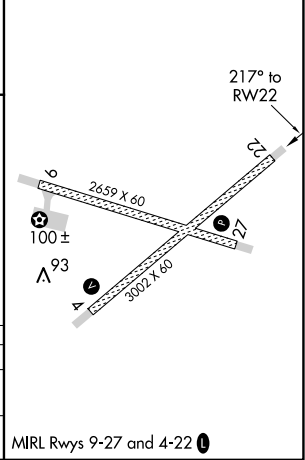
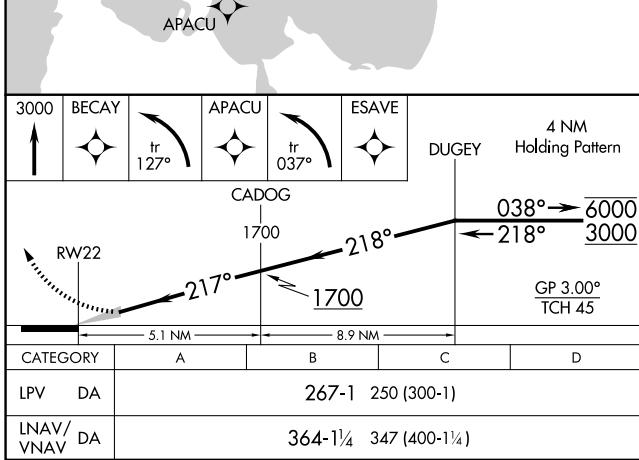
RNP APCH. ▼ For uncompensated Baro-VNAV systems, LNAV/VNAV NA below -25°C or above 49°C.		MISSED APPROACH: Climb to 3000 direct BECAY and left turn on track 127° to APACU and left turn on track 037° to ESAVE and hold.	
AWOS-3P 135.65	ANCHORAGE CENTER 119.2 263.0	KOTZEBUE RADIO 122.5	CTAF 122.7



AK, 17 APR 2025 to 12 JUN 2025

AK, 17 APR 2025 to 12 JUN 2025

ELEV 17	TDZE 17
---------	---------



MIRL Rwy 9-27 and 4-22