

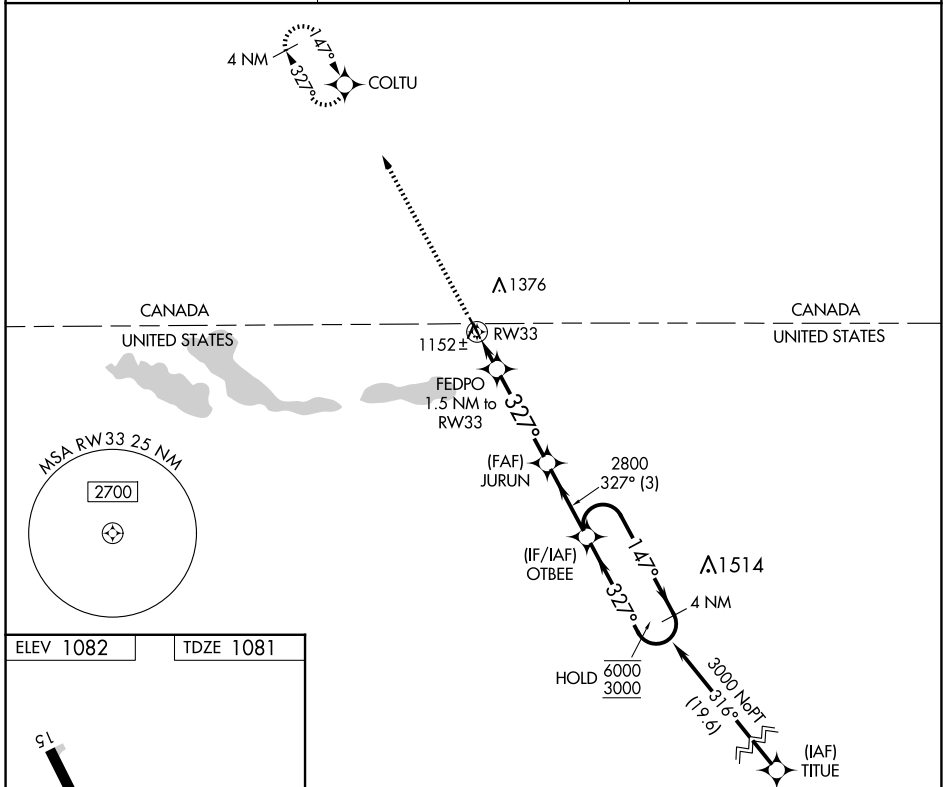
APP CRS	Rwy Idg	3297
327°	TDZE	1081
	Apt Elev	1082

RNAV (GPS) RWY 33

PINEY PINECREEK BORDER (48Y)

RNP APCH-GPS.	MISSED APPROACH: Climb to 3700 direct COLTU and hold.
<p>▼ Use Roseau altimeter setting; when not received, use</p> <p>▲ NA Warroad altimeter setting and increase all MDA 40 feet.</p>	

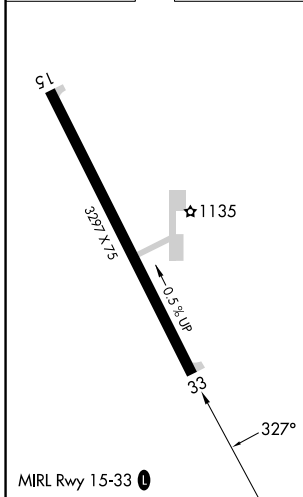
ROX AWOS-3 118.075	MINNEAPOLIS CENTER 134.75 251.1	UNICOM 122.8 (CTAF) 0
------------------------------	---	---------------------------------



NC-1, 17 APR 2025 to 15 MAY 2025

NC-1, 17 APR 2025 to 15 MAY 2025

ELEV 1082	TDZE 1081
-----------	-----------



3700	COLTU	JURUN	OTBEE	4 NM Holding Pattern
↑	✧			
	FEDPO 1.5 NM to RW33	2800	147° → 6000	← 327° 3000
	RW33	327°		
	1580			
	1.5 NM	3.8 NM	3 NM	
CATEGORY	A	B	C	D
LNAV MDA	1440-1	359 (400-1)		NA
CIRCLING	1500-1 418 (500-1)	1780-1 698 (700-1)		NA