

WAAS CH 70631 W31A	APP CRS 313°	Rwy Idg TDZE Apt Elev	4198 1606 1607
---------------------------------	------------------------	-----------------------------	---

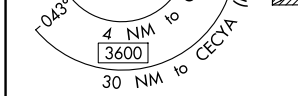
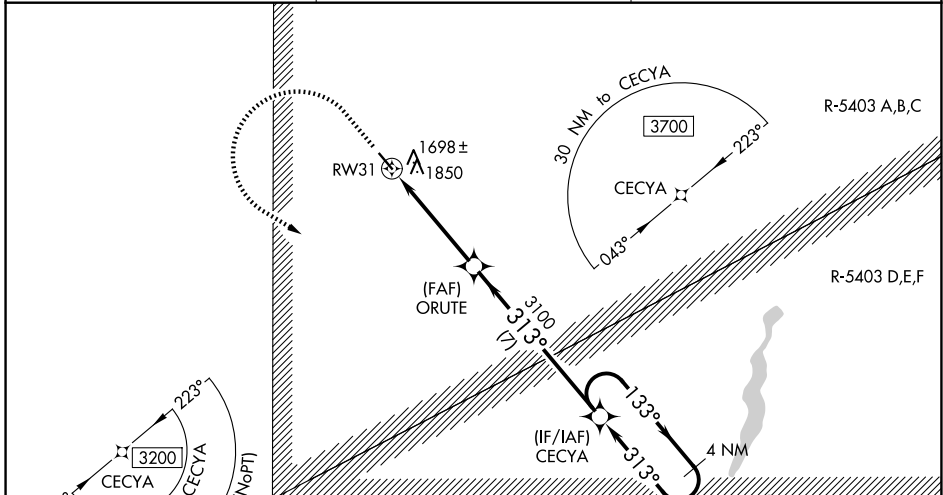
RNAV (GPS) RWY 31

CARRINGTON MUNI (46D)

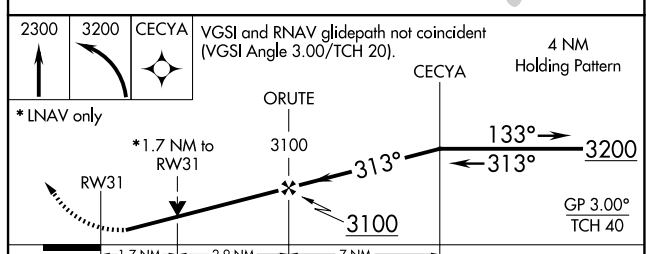
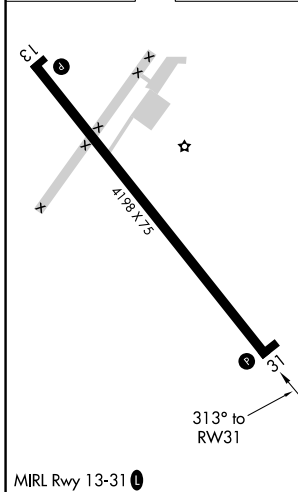
▼ For uncompensated Baro-VNAV systems, LNAV/VNAV NA below -18°C (0°F) or above 54°C (130°F). DME/DME RNP-0.3 NA. Helicopter visibility reduction below ¾ SM NA. Circling Rwy 13 NA at night. VDP and Baro-VNAV NA with Jamestown altimeter setting. When local altimeter setting not received, use Jamestown altimeter setting and increase all DA and MDA 100 feet, increase LPV all Cats visibility ½ mile; LNAV/VNAV all Cats visibility ¾ mile; LNAV Cat C visibility ¼ mile and Circling Cat C visibility ¾ mile.

▲ MISSED APPROACH: Climb to 2300 then climbing left turn to 3200 direct CECYA and hold.

AWOS-3 118.575	MINNEAPOLIS CENTER 124.2 270.3	CTAF 122.9 0
--------------------------	--	------------------------



ELEV 1607	TDZE 1606
-----------	-----------



CATEGORY	A	B	C	D
LPV DA	1856-1	250 (300-1)		NA
LNAV/VNAV DA	2050-1½	444 (500-1½)		NA
LNAV MDA	2160-1	554 (600-1)	2160-1½ 554 (600-1½)	NA
C CIRCLING	2200-1	593 (600-1)	2200-1½ 593 (600-1½)	NA

NC-1, 17 APR 2025 to 15 MAY 2025

NC-1, 17 APR 2025 to 15 MAY 2025