

APP CRS 008°	Rwy Idg 4199
	TDZE 5999
	Apt Elev 5999

RNAV (GPS) RWY 1

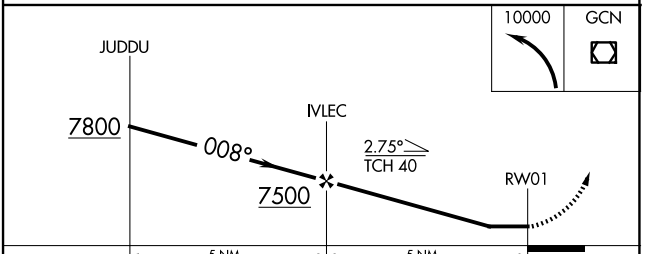
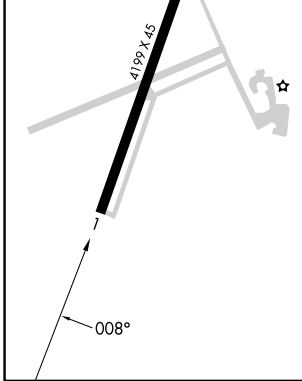
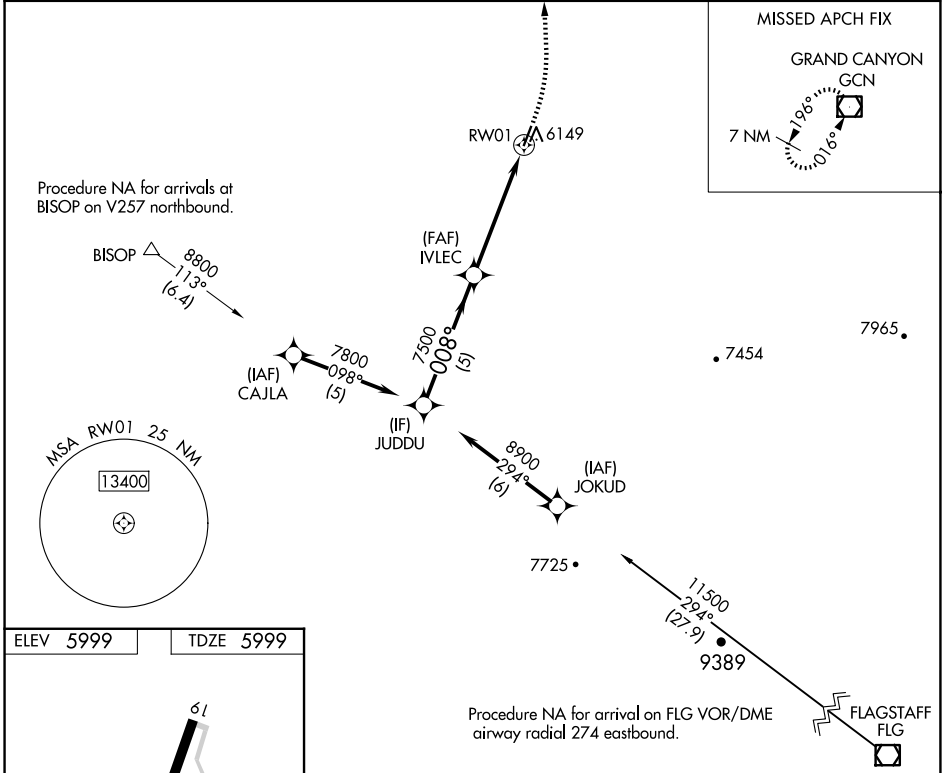
VALLE (40G)

RNP APCH.

NA Procedure NA at night. Rwy 1 helicopter visibility reduction below 1 SM NA. Use Grand Canyon Natl Park altimeter setting; when not received, procedure NA.

MISSED APPROACH: Climbing left turn to 10000 direct GCN VOR/DME and hold.

GCN ASOS 124.3	LOS ANGELES CENTER 124.85 319.2	UNICOM 122.8 (CTAF)
--------------------------	---	-------------------------------



CATEGORY	A	B	C	D
LNAV MDA	6620-1	621 (700-1)	6620-1 ³ / ₄ 621 (700-1 ³ / ₄)	NA
CIRCLING	6620-1 621 (700-1)	6640-1 641 (700-1)	6640-1 ³ / ₄ 641 (700-1 ³ / ₄)	NA

SW-4, 17 APR 2025 to 15 MAY 2025

SW-4, 17 APR 2025 to 15 MAY 2025