

# RNAV (GPS) RWY 19

VALLE (40G)

APP CRS <b>188°</b>	Rwy Idg <b>4199</b>
	TDZE <b>5996</b>
	Apt Elev <b>5999</b>

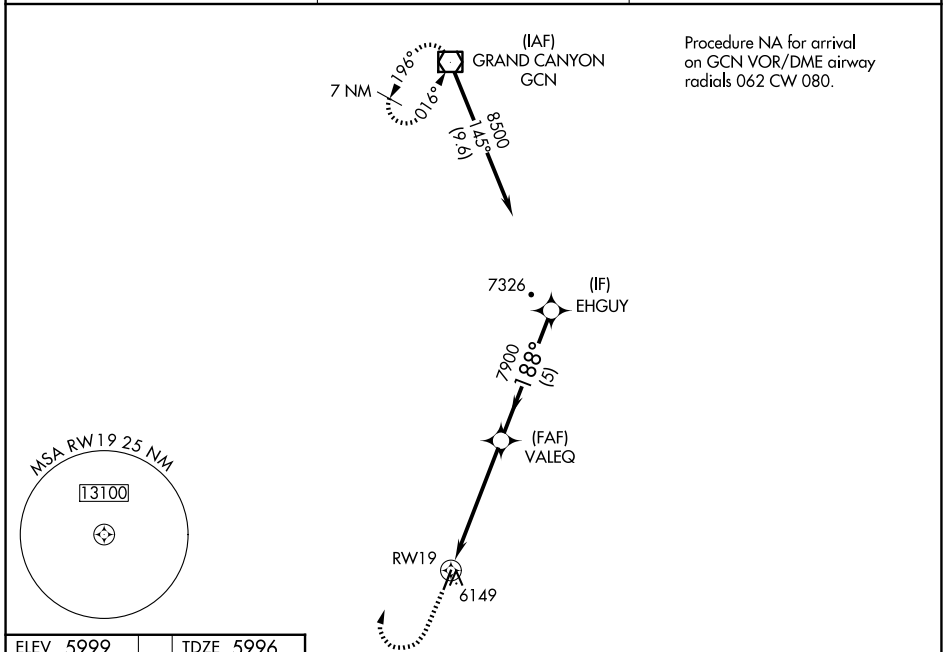
RNP APCH.  
 Procedure NA at night. Rwy 19 helicopter visibility reduction below 1 SM NA. Use Grand Canyon NH Park altimeter setting; when not received, procedure NA.

MISSED APPROACH: Climb to 7000 then climbing right turn to 10000 direct GCN VOR/DME and hold.

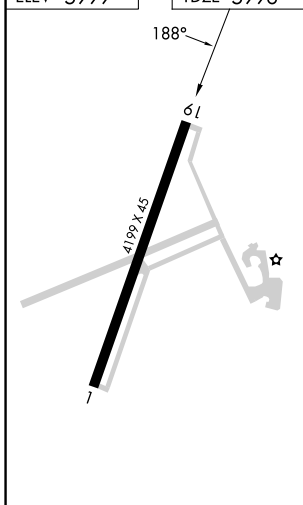
GCN ASOS  
**124.3**

LOS ANGELES CENTER  
**124.85 319.2**

UNICOM  
**122.8 (CTAF)**



ELEV 5999	TDZE 5996
-----------	-----------



7000	10000	GCN		
↑	↷	□		
RW19			VALEQ	EHGUY
7900			7900	8500
≤ 3.50° TCH 50				
5 NM			5 NM	
CATEGORY	A	B	C	D
LNAV MDA	6560-1	564 (600-1)	6560-1 <sup>5</sup> / <sub>8</sub> 564 (600-1 <sup>5</sup> / <sub>8</sub> )	NA
<input checked="" type="checkbox"/> CIRCLING	6620-1 621 (700-1)	6640-1 641 (700-1)	6640-1 <sup>3</sup> / <sub>4</sub> 641 (700-1 <sup>3</sup> / <sub>4</sub> )	NA

SW-4, 17 APR 2025 to 15 MAY 2025

SW-4, 17 APR 2025 to 15 MAY 2025