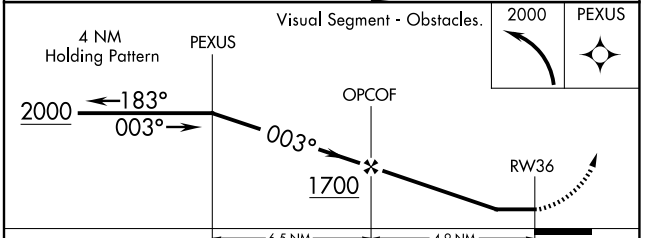
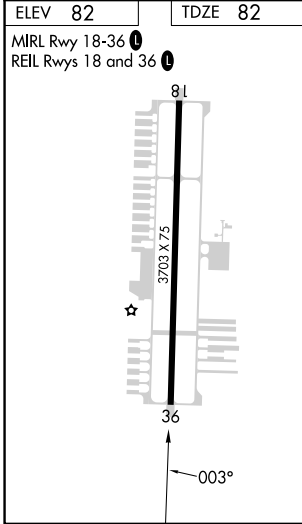
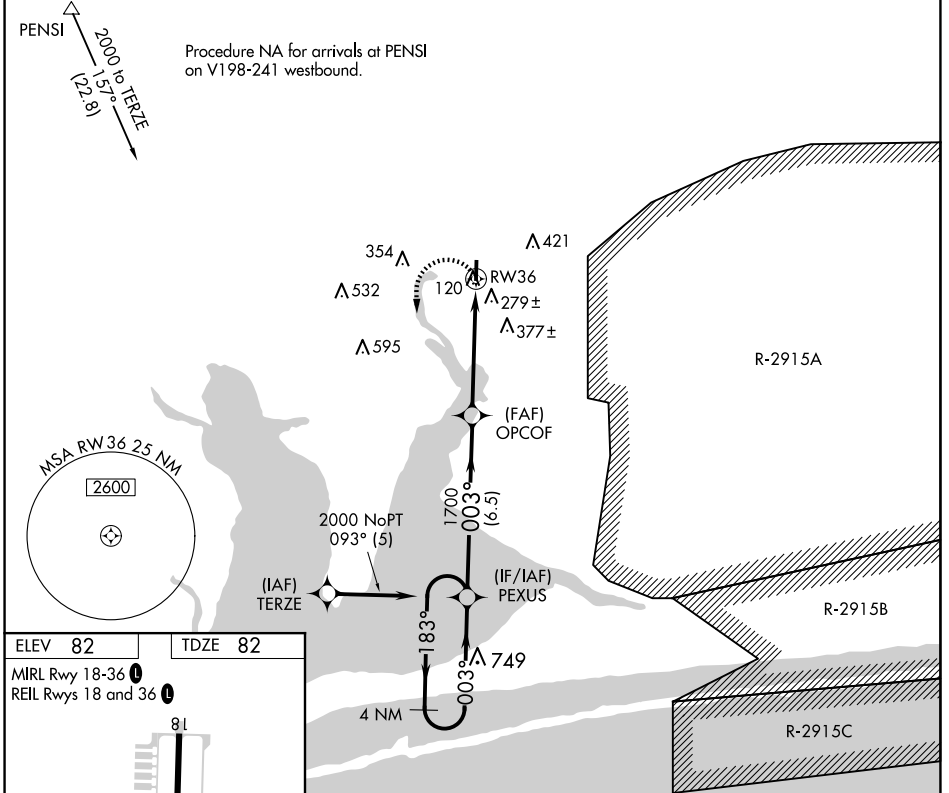


APP CRS	Rwy Idg	<b>3703</b>
<b>003°</b>	TDZE	<b>82</b>
	Apt Elev	<b>82</b>

# RNAV (GPS) RWY 36

PETER PRINCE FLD (2R4)

RNP APCH.		MISSED APPROACH: Climbing left turn to 2000 direct PEXUS and hold.
Rwy 36 helicopter visibility reduction below 1 SM NA. Use Pensacola Intl altimeter setting; when not received, use Crestview altimeter setting and increase all MDA 40 feet; increase LNAV visibility Cat C ½ SM. Procedure NA at night.		
PENSACOLA APP CON	GCO	AUNICOM
<b>124.85 235.775</b>	<b>121.725</b>	<b>122.975 (CTAF) 1</b>



CATEGORY	A	B	C	D
LNAV MDA	580-1	498 (500-1)	580-1 3/8 498 (500-1 3/8)	NA
CIRCLING	700-1	618 (700-1)	760-2 678 (700-2)	NA

SE-3, 17 APR 2025 to 15 MAY 2025

SE-3, 17 APR 2025 to 15 MAY 2025