

WAAS CH 53627 W29A	APP CRS 294°	Rwy Idg TDZE 2130 Apt Elev 2131
--	------------------------	---

RNAV (GPS) RWY 29

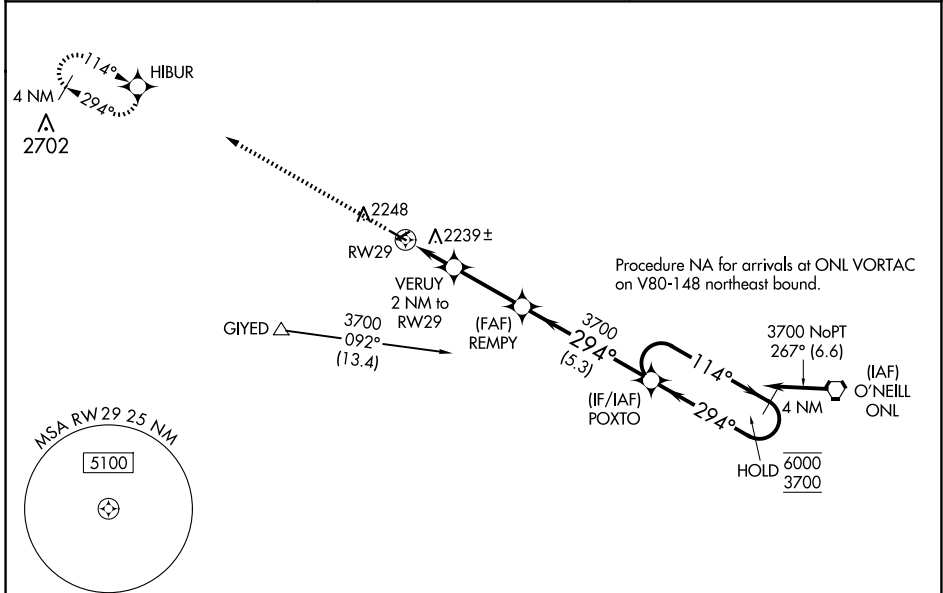
STUART-ATKINSON MUNI (8V2)

RNP APCH - GPS.

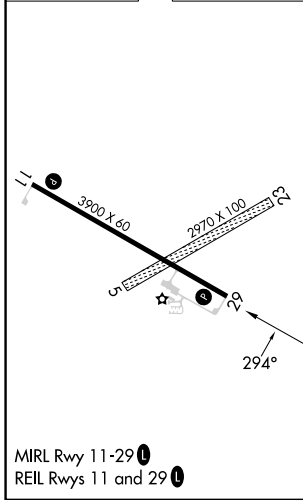
NA Baro-VNAV NA. Circling NA to Rwy 5 and 23. Use ONL altimeter setting; when not received, use ANW altimeter setting and increase LPV DA to 2538 feet and all visibilities to 1 1/8 SM, LNAV/VNAV DA to 2563 feet and all visibilities to 1 1/2 SM, increase all MDAs 120 feet.

MISSED APPROACH: Climb to 3900 direct HIBUR and hold.

ONL AWOS-3 121.125	MINNEAPOLIS CENTER 128.0 257.95	CTAF 122.9
------------------------------	---	----------------------



ELEV 2131	TDZE 2130
-----------	-----------



	3900	HIBUR	REMPY	POXTO	4 NM Holding Pattern
			3700		6000 3700
		VERUY 2 NM to RWY 29	2800	294°	114° →
				← 294°	GP 3.00° TCH 40
		2 NM	2.8 NM	5.3 NM	
CATEGORY	A	B	C	D	
LPV DA	2432-1	302 (400-1)		NA	
LNAV/VNAV DA	2457-1 1/8	327 (400-1 1/8)		NA	
LNAV MDA	2560-1	430 (500-1)		NA	
CIRCLING	2620-1 489 (500-1)	2640-1 509 (600-1)		NA	

NC-2, 17 APR 2025 to 15 MAY 2025

NC-2, 17 APR 2025 to 15 MAY 2025