

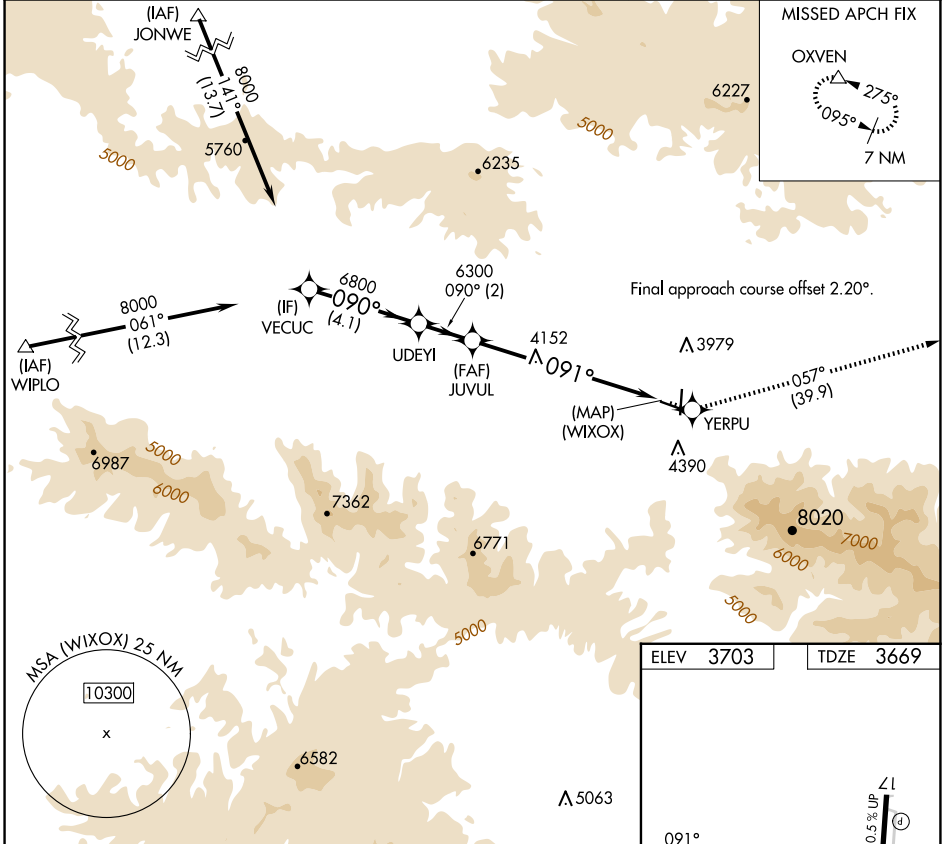
WAAS CH 73010 W09A	APP CRS 091°	Rwy Idg 4100 TDZE 3669 Apt Elev 3703
--	------------------------	---

RNAV (GPS) Z RWY 9

GRANT COUNTY RGNL/OGILVIE FLD (GCD)

RNP APCH - GPS.	MISSED APPROACH: Climb to 12000 direct YERPU and on track 057° to OXVEN and hold, continue climb-in-hold to 12000.
▼ When local altimeter setting not received, procedure NA. Rwy 9 helicopter visibility reduction below 3/4 SM NA.	

AWOS-3 118.375	SEATTLE CENTER 128.15 257.75	UNICOM 122.8 (CTAF) 0
--------------------------	--	--



NW-1, 17 APR 2025 to 15 MAY 2025

NW-1, 17 APR 2025 to 15 MAY 2025

ELEV 3703		TDZE 3669	
VEUCUC		12000	YERPU
8000		↑	✧
090°		Tr	OXVEN
6800		057°	△
6300		VGSI and RNAV glidepath not coincident (VGSI Angle 3.00/TCH 45).	
6300		(WIXOX)	
GP 3.40°		4100 X 60	
TCH 54		5224 X 60	
4.1 NM		2.7	
2 NM		35	
7.1 NM		Z1	
CATEGORY		REIL Rwys 17 and 9 0	
A		MIRL Rwys 9-27 and 17-35 0	
B			
C			
D			
LPV DA		NA	
4269-2		600 (600-2)	