

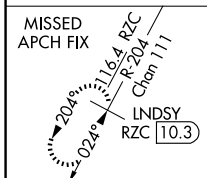
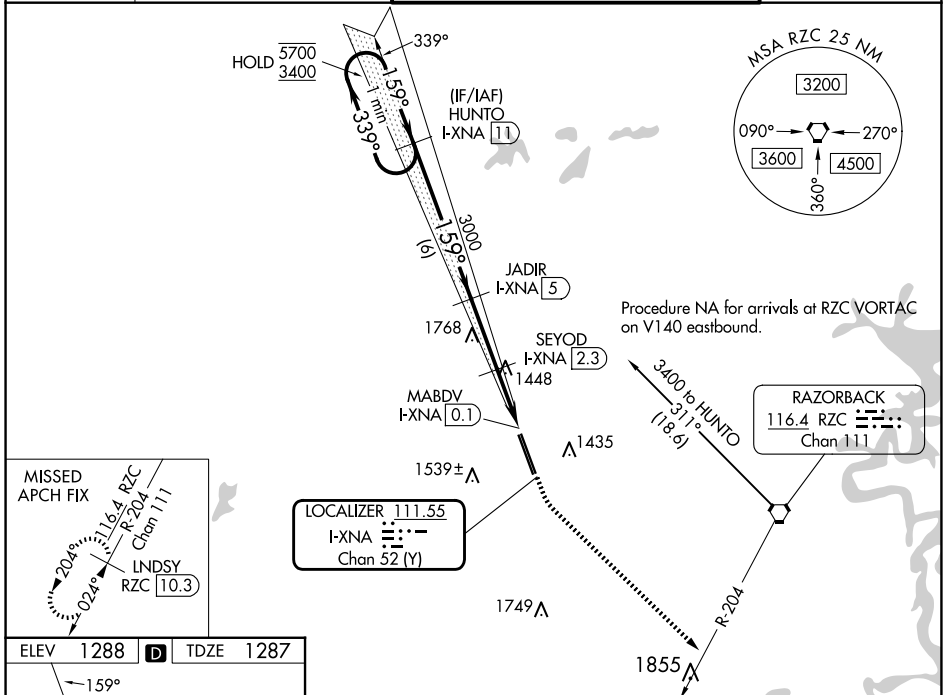
LOC/DME I-XNA 111.55 Chan 52 (Y)	APP CRS 159°	Rwy ldg TDZE 8800 1287	Apt Elev 1288
---	------------------------	--	-------------------------

ILS or LOC RWY 16L

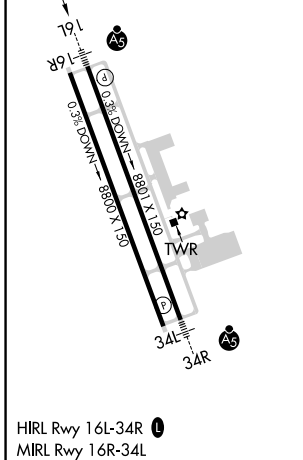
NORTHWEST ARKANSAS NTL (XNA)

DME required.	MALSR	MISSED APPROACH: Climb to 1800 then climbing left turn to 3400 on heading 133° and RZC VORTAC R-204 to LNSDY/RZC 10.3 DME and hold.
<p>▼ For inop ALS, increase S-ILS 16L Cat E visibility to RVR 4000 and S-LOC 16L Cats C, D, and E visibility to RVR 6000.</p> <p>▲ * RVR 1800 authorized with use of FD or AP or HUD to DA.</p>		

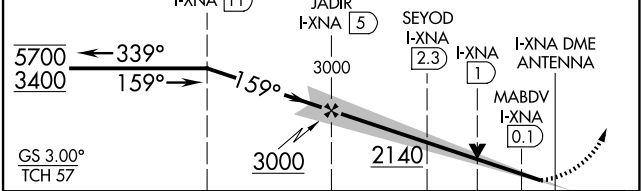
ATIS 119.425	RAZORBACK APP CON * 121.0 244.575	NORTHWEST ARKANSAS NTL TOWER * 127.1 (CTAF) 0	GND CON 121.9
------------------------	---	---	-------------------------



ELEV 1288	D	TDZE 1287
-----------	---	-----------



One Minute Holding Pattern	HUNTO I-XNA 11	JADIR I-XNA 5	SEYOD I-XNA 2.3	I-XNA 1	I-XNA DME ANTENNA
----------------------------	----------------	---------------	-----------------	---------	-------------------



VGSI and ILS glidepath not coincident (VGSI Angle 3.00/TCH 52).	1800	3400	RZC R-204	LNSDY RZC 10.3	
One Minute Holding Pattern	HUNTO I-XNA 11	JADIR I-XNA 5	SEYOD I-XNA 2.3	I-XNA 1	
GS 3.00° TCH 57	5700 ← 339°	3400 → 159°	3000 → 159°	2140 → 159°	MABDV I-XNA 0.1
CATEGORY	A	B	C	D	E
S-ILS 16L*	1487/24 200 (200-½)				
S-LOC 16L	1700/24 413 (500-½)	1700/40 413 (500-¾)			
CIRCLING	1740-1 452 (500-1)	1760-1 472 (500-1)	2040-2¼ 752 (800-2¼)	2080-2½ 792 (800-2½)	2080-2¾ 792 (800-2¾)

SC-1, 17 APR 2025 to 15 MAY 2025

SC-1, 17 APR 2025 to 15 MAY 2025