

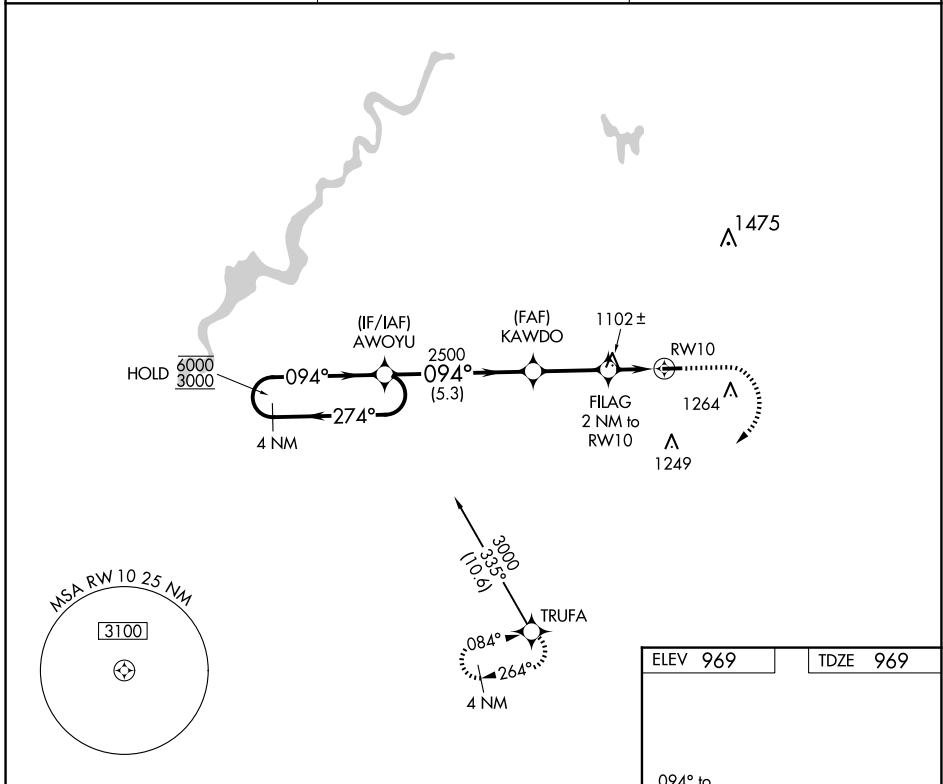
APP CRS	Rwy Idg	3499
094°	TDZE	969
	Apt Elev	969

RNAV (GPS) RWY 10

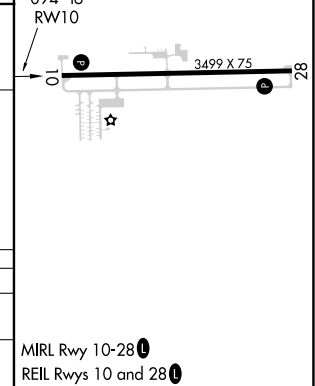
LAKEVIEW/GRIFFITH FLD (13C)

RNP APCH.	Procedure NA at night. Rwy 10 helicopter visibility reduction below 1 SM NA. Use Big Rapids altimeter setting.	MISSED APPROACH: Climb to 1800 then climbing right turn to 3000 direct TRUFA and hold.
⚠ NA		

RQB AWOS-3P 125.875	GREAT LAKES APP CON * 124.6 257.6	UNICOM 122.8 (CTAF)
-------------------------------	---	-------------------------------



Visual Segment - Obstacles.	1800	3000	TRUFA	
4 NM Holding Pattern AWOYU KAWDO FILAG 2 NM to RWY 10 RWY 10	↑ 1800	↷ 3000	△ TRUFA	
6000 ← 274° 3000 → 094° 2500 1640				
5.3 NM 2.7 NM 2 NM				
CATEGORY	A	B	C	D
LNVA MDA	1400-1	431 (500-1)	NA	
CIRCLING	1480-1 511 (600-1)	1580-1 611 (700-1)	NA	



EC-1, 17 APR 2025 to 15 MAY 2025

EC-1, 17 APR 2025 to 15 MAY 2025

MRL Rwy 10-28
REIL Rwy 10 and 28