

APP CRS <b>274°</b>	Rwy Idg <b>3499</b>
	TDZE <b>969</b>
	Apt Elev <b>969</b>

# RNAV (GPS) RWY 28

LAKEVIEW/GRIFFITH FLD (13C)

RNP APCH - GPS.

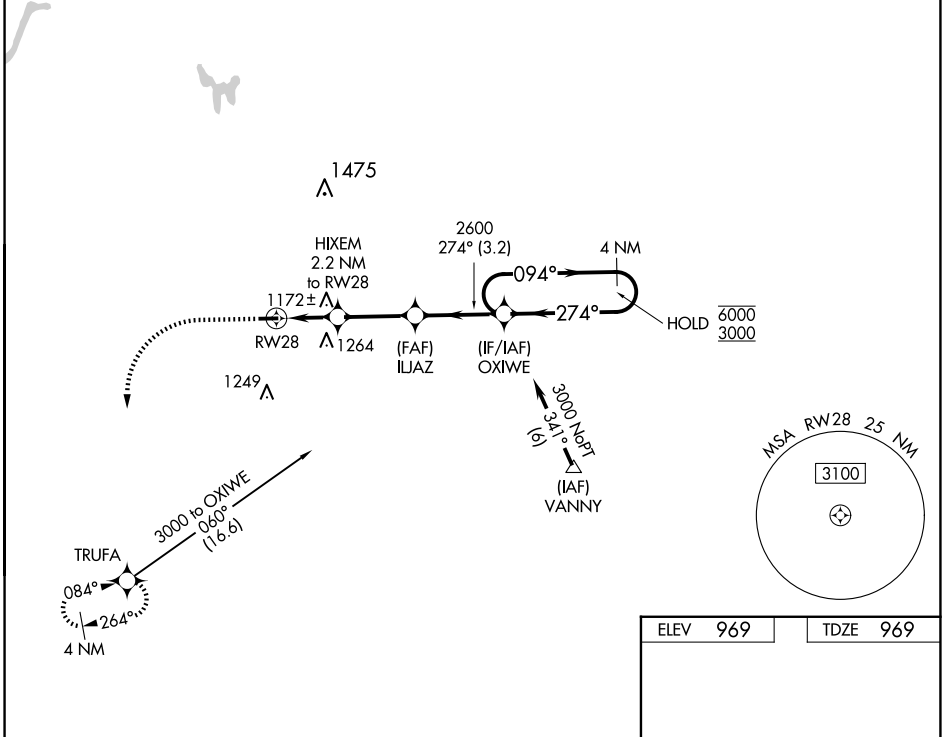
**NA** Procedure NA at night. Use Big Rapids altimeter setting; when not received, use Mount Pleasant altimeter setting and increase all MDAs 60 feet. Rwy 28 helicopter visibility reduction below 1 SM NA.

MISSED APPROACH: Climb to 1800 then climbing left turn to 3000 direct TRUFA and hold.

RQB AWOS-3P  
**125.875**

GREAT LAKES APP CON \*  
**124.6 257.6**

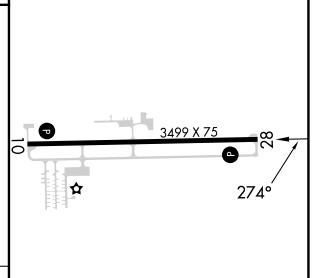
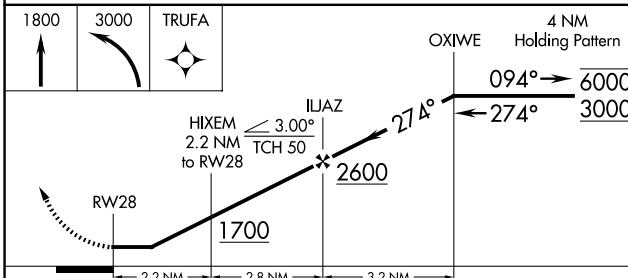
UNICOM  
**122.8 (CTAF) 0**



EC-1, 17 APR 2025 to 15 MAY 2025

EC-1, 17 APR 2025 to 15 MAY 2025

ELEV	969	TDZE	969
------	-----	------	-----



CATEGORY	A	B	C	D
LNAV MDA	1480-1	511 (600-1)		NA
<b>C</b> CIRCLING	1480-1 511 (600-1)	1580-1 611 (700-1)		NA

MIRL Rwy 10-28 **0**  
REIL Rwy 10 and 28 **0**