

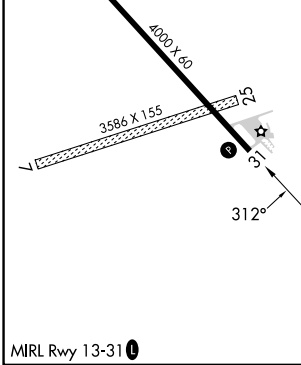
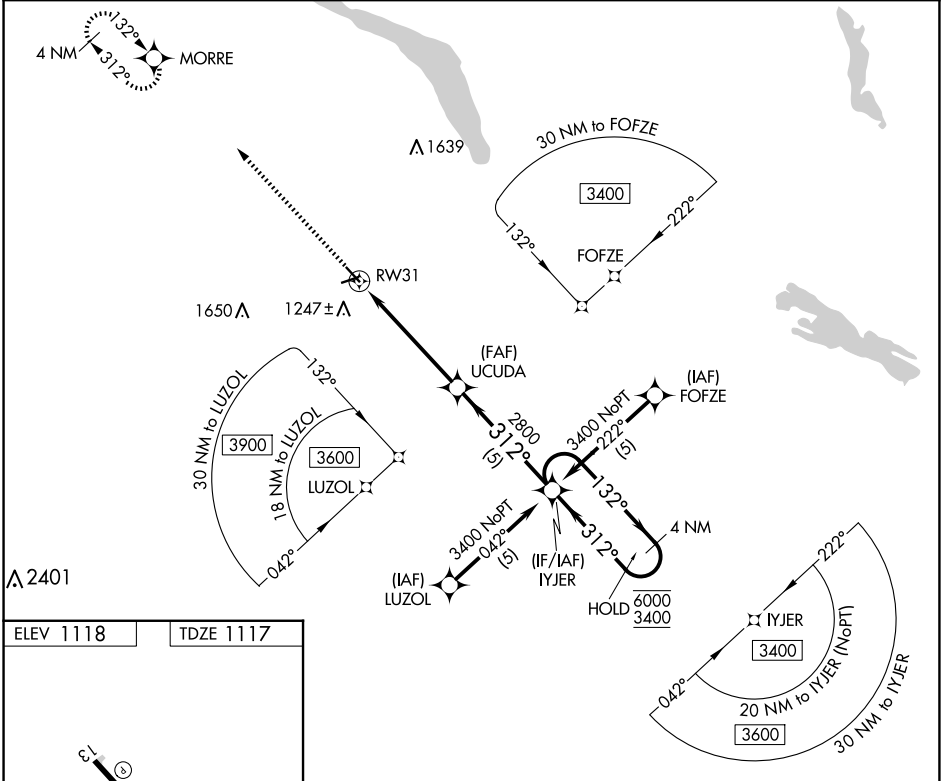
APP CRS	Rwy Idg	4000
312°	TDZE	1117
	Apt Elev	1118

RNAV (GPS) RWY 31

MILBANK MUNI (1D1)

RNP APCH - GPS.	MISSED APPROACH: Climb to 3400 direct MORRE and hold.
▽ Rwy 31 helicopter visibility reduction below 3/4 SM NA. Circling Rwy 7, 25 NA. When local altimeter setting not received, use Ortonville altimeter setting and increase all MDAs 20 feet. VDP NA when using Ortonville Muni/Martinson Fld altimeter setting.	

AWOS-3P 118.9	MINNEAPOLIS CENTER 128.5 306.2	AUNICOM 122.8 (CTAF) 0
-------------------------	--	----------------------------------



3400 MORRE	Visual Segment - Obstacles.			
	UCUDA	IYJER	4 NM Holding Pattern	
	1.8 NM to RW31	2800	132° →	6000
			← 312°	3400
	1.8 NM	3.4 NM	5 NM	
CATEGORY	A	B	C	D
LNAV MDA	1720-1	603 (700-1)	NA	
C CIRCLING	1720-1	602 (700-1)	NA	

NC-1, 17 APR 2025 to 15 MAY 2025

NC-1, 17 APR 2025 to 15 MAY 2025