

WAAS CH 86540 W27A	APP CRS 274°	Rwy Ldg 4650 TDZE 1463 Apt Elev 1470
--	------------------------	---

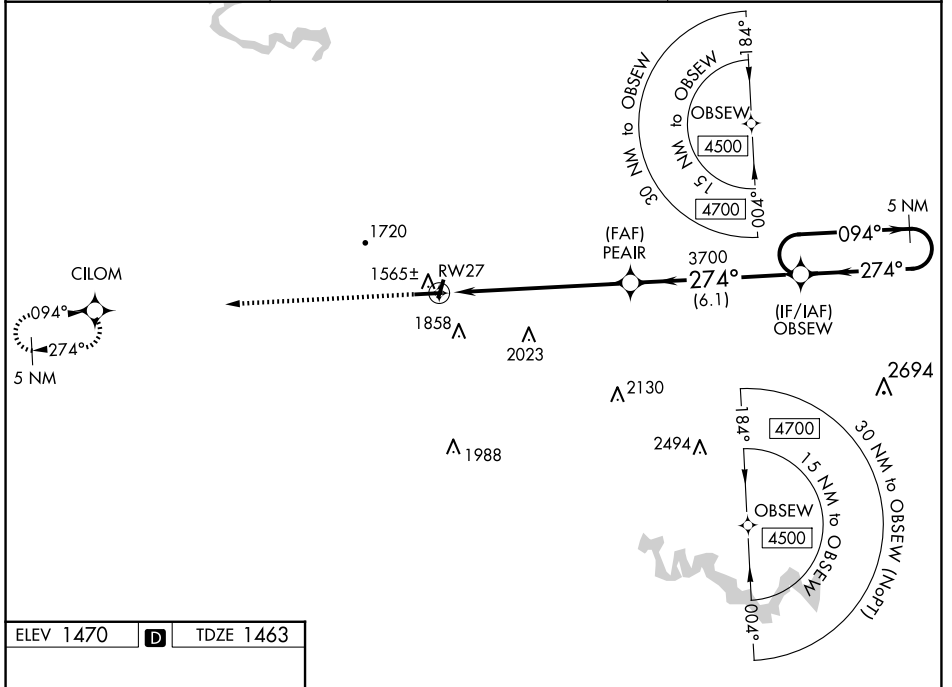
RNAV (GPS) RWY 27

PIKE COUNTY/HATCHER FLD (P.B.X)

⚠ For uncompensated Baro-VNAV systems, LNAV/VNAV NA below -17°C (0°F) or above 54°C (130°F). DME/DME RNP-0.3 NA. Circling NA to Rwys 2 and 20.

MISSED APPROACH: Climb to 4500 direct CILOM and hold.

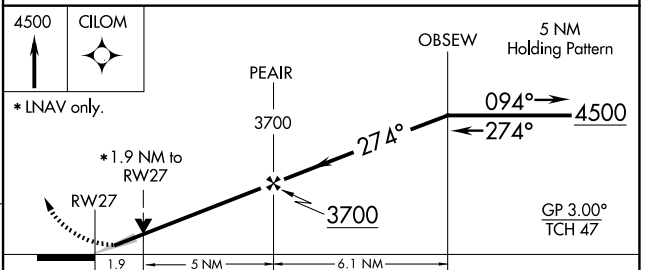
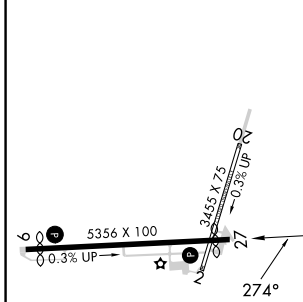
AWOS-3PT 121.225	INDIANAPOLIS CENTER 126.575 257.85	UNICOM 122.8 (CTAF) 0
----------------------------	--	---------------------------------



SE-1, 17 APR 2025 to 15 MAY 2025

SE-1, 17 APR 2025 to 15 MAY 2025

ELEV 1470	D	TDZE 1463
-----------	----------	-----------



CATEGORY	A	B	C	D
LPV DA	1663-1 200 (200-1)			
LNAV/VNAV DA	2175-2 1/2 712 (800-2 1/2)			
LNAV MDA	2120-1	657 (700-1)	2120-1 3/4	657 (700-1 3/4)
C CIRCLING	2120-1 650 (700-1)	2160-1 690 (700-1)	2160-2 690 (700-2)	2460-3 990 (1000-3)