

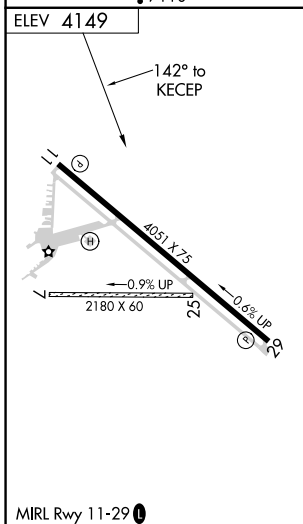
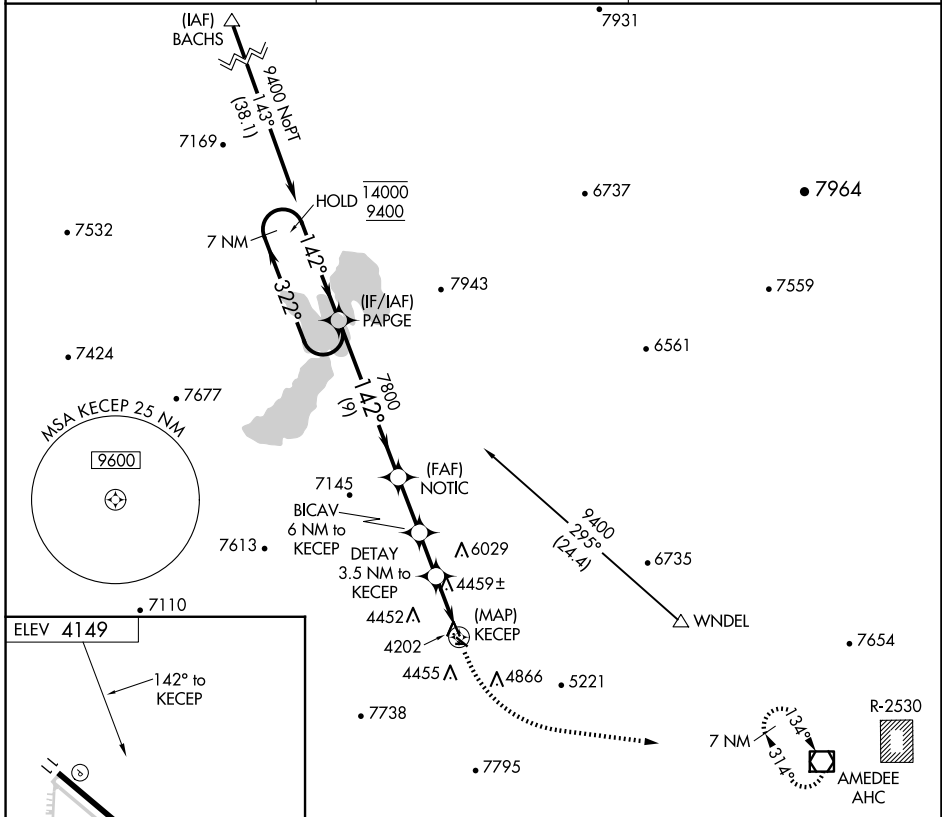
APP CRS	Rwy Idg	N/A
142°	TDZE	N/A
	Apt Elev	4149

# RNAV (GPS)-A

SUSANVILLE MUNI (SV E)

RNP APCH.	<p>MISSED APPROACH: Climbing left turn to 14000 direct AHC VOR/DME and hold, continue climb-in-hold to 14000.</p>
<p>▼ Circling NA for Cat D southwest of Rwy 11-29.                  ▲ NA When local altimeter setting not received, procedure NA.                  Circling NA to Rwy 7/25.</p>	

AWOS-3 <b>133.8</b>	OAKLAND CENTER <b>128.8 285.5</b>	UNICOM <b>122.8 (CTAF) 0</b>
------------------------	--------------------------------------	---------------------------------



	7 NM Holding Pattern	PAPGE	NOTIC	BICAV 6 NM to KECEP	DETAI 3.5 NM to KECEP	14000 AHC
	14000	9400	7800	7360	6360	KECEP
		9 NM	3.2 NM	2.5 NM	3.5 NM	
CATEGORY	A	B	C	D		
☑ CIRCLING	5260-1¼ 1111 (1200-1¼)	5260-1½ 1111 (1200-1½)	5780-3 1631 (1700-3)	6060-3 1911 (2000-3)		

SW-2, 17 APR 2025 to 15 MAY 2025

SW-2, 17 APR 2025 to 15 MAY 2025