

APP CRS	Rwy Idg	5510
175°	TDZE	4041
	Apt Elev	4044

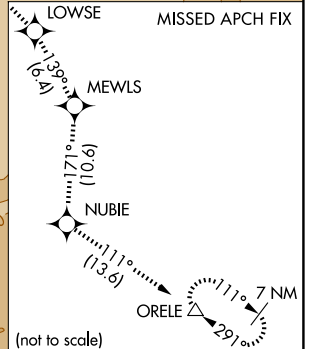
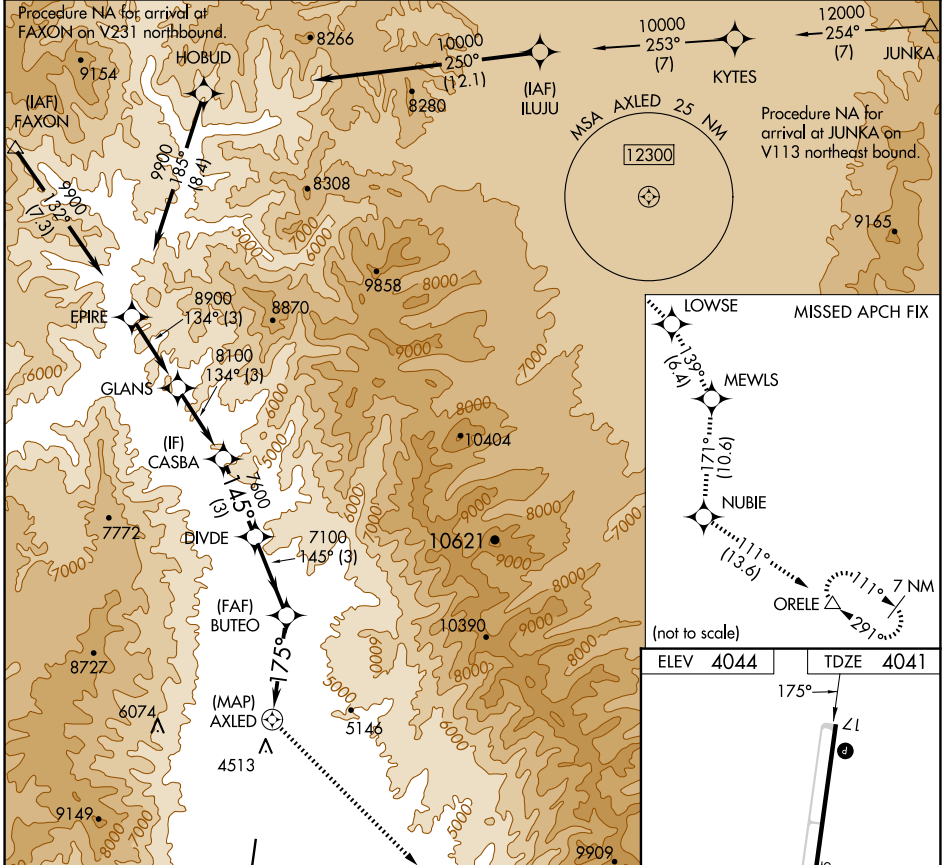
RNAV (GPS) RWY 17

LEMHI COUNTY (SMN)

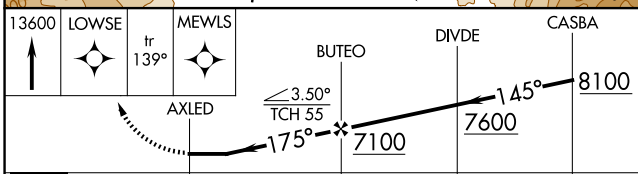
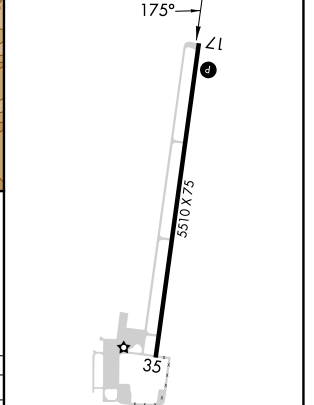
NA
-13°C
 DME/DME RNP-0.3 NA. Night landing: Rwy 35 NA.
 Circling NA for Cats B and C east of Rwy 17-35.
 Helicopter visibility reduction below 3/4 SM NA.

MISSED APPROACH: Climb to 13600 direct LOWSE and track 139° to MEWLS and track 171° to NUBIE and track 111° to ORELE and hold, continue climb-in-hold to 13600.

AWOS-3PT 135.075	SALT LAKE CENTER 132.4 338.3	UNICOM 122.8 (CTAF)
----------------------------	--	-------------------------------



ELEV 4044	TDZE 4041
-----------	-----------



CATEGORY	A	B	C	D
LNVA MDA	5740-5 1699 (1700-5)			NA
C CIRCLING	5740-5	1696 (1700-5)	6180-5 2136 (2200-5)	NA

REIL Rws 17 and 35
 MIRL Rwy 17-35

NW-1, 17 APR 2025 to 15 MAY 2025

NW-1, 17 APR 2025 to 15 MAY 2025