

# RNAV (GPS)-D

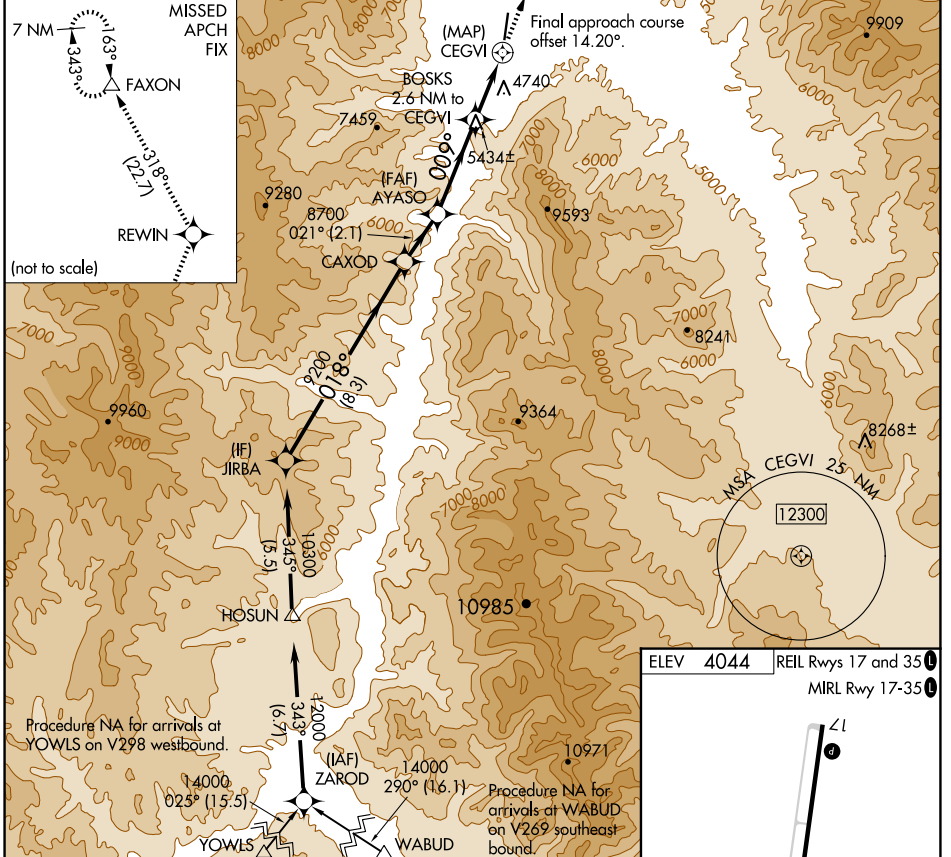
LEMHI COUNTY (SMN)

APP CRS <b>009°</b>	Rwy Idg TDZE Apt Elev	<b>N/A</b> <b>N/A</b> <b>4044</b>
------------------------	-----------------------------	---

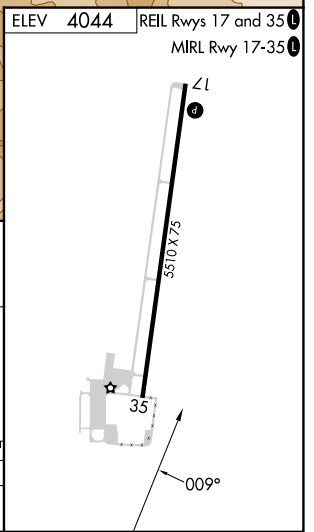
**NA** Circling Rwy 35 NA at night.  
**NA** DME/DME RNP-0.3 NA.  
**-13°C** Circling NA for Cat C east of Rwy 17-35.

**MISSED APPROACH:** Climb to 12000 direct REWIN and on track 318° to FAXON and hold, continue climb-in-hold to 12000.

AWOS-3PT <b>135.075</b>	SALT LAKE CENTER <b>132.4 338.3</b>	UNICOM <b>122.8 (CTAF)</b>
----------------------------	--	-------------------------------



JIRBA	CAXOD	AYASO	BOSKS 2.6 NM to CEGVI	CEGVI	REWIN	FAXON
10300	9200	8700	7020	7020	12000	
8.3 NM		2.1 NM	3.6 NM	2.6 NM	0.5	
018°		021°	009°	009°	318°	
A		B	C	D		
6000-1¼ 1956 (2000-1¼)		6000-1½ 1956 (2000-1½)	6220-3 2176 (2200-3)	NA		



NW-1, 17 APR 2025 to 15 MAY 2025

NW-1, 17 APR 2025 to 15 MAY 2025