

(KARPS2.KARPS) 19003

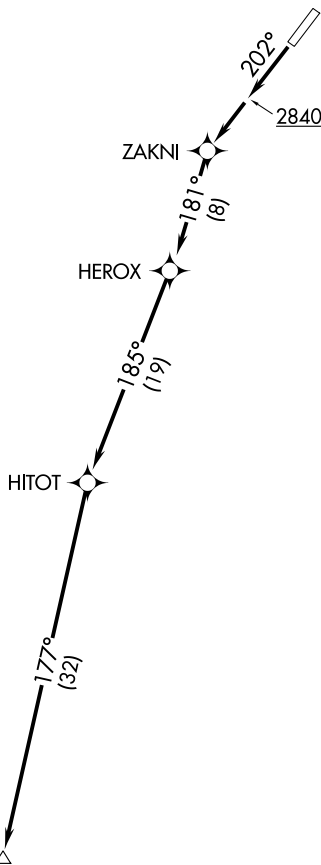
KARPS TWO DEPARTURE (OBSTACLE) (RNAV)

AL-9976 (FAA)

BOUNDARY COUNTY (65S)

BONNERS FERRY, IDAHO

SEATTLE CENTER
123.95 290.55
CTAF
123.0



NOTE: RNAV 1.
NOTE: GPS required.

TAKEOFF MINIMUMS

Rwy 2: NA- Terrain.
Rwy 20: Standard with minimum climb of 245' per NM to 5500.

TAKEOFF OBSTACLE NOTES

Rwy 20: Trees and pole beginning 741' from DER, 684' left of centerline, up to 111' AGL/2417' MSL.
 Terrain 138' from DER, 357' right of centerline, 2324' MSL.
 Building 583' from DER, 523' right of centerline, 52' AGL/2362' MSL.
 Crane 855' from DER, 586' right of centerline, 61' AGL/2368' MSL.
 Crane 861' from DER, 713' right of centerline, 72' AGL/2377' MSL.
 Tree 931' from DER, 460' right of centerline, 92' AGL/2397' MSL.
 Tree 2024' from DER, 2' right of centerline, 107' AGL/2399' MSL.
 Tree 2175' from DER, 182' right of centerline, 113' AGL/2403' MSL.

NOTE: Chart not to scale.

DEPARTURE ROUTE DESCRIPTION

TAKEOFF RUNWAY 20: Climb heading 202° to 2840, then direct ZAKNI, then on depicted route to KARPS, cross KARPS at or above MEA for assigned route of flight.

KARPS TWO DEPARTURE (OBSTACLE) (RNAV)

(KARPS2.KARPS) 03JAN19

BONNERS FERRY, IDAHO
BOUNDARY COUNTY (65S)

NW-1, 17 APR 2025 to 15 MAY 2025

NW-1, 17 APR 2025 to 15 MAY 2025