

APP CRS	Rwy Idg 2298
067°	TDZE 41
	Apt Elev 41

RNAV (GPS) RWY 7

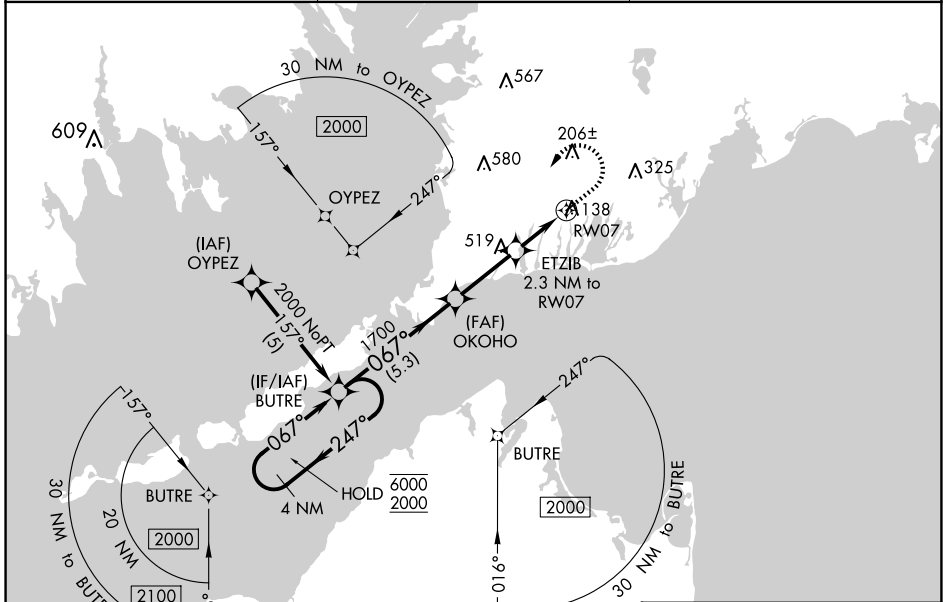
FALMOUTH AIRPARK (5B6)

RNP APCH - GPS.

NA Rwy 7 helicopter visibility reduction below 1 SM NA. Use Cape Cod Coast Guard Air Station altimeter setting. When not received, procedure NA. Procedure NA at night.

MISSED APPROACH: Climb to 800 then climbing left turn to 2000 direct BUTRE and hold.

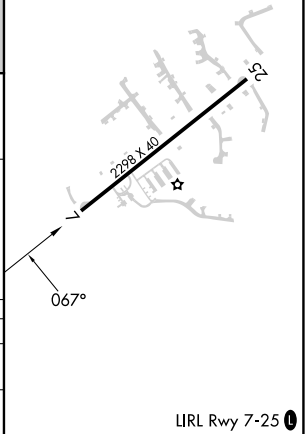
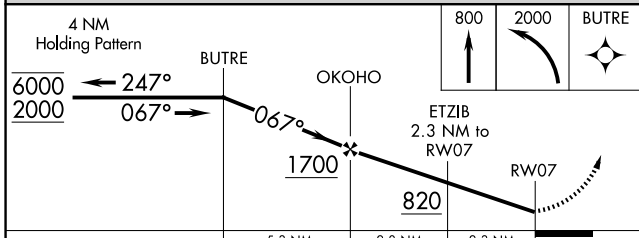
BOSTON APP CON 118.2	UNICOM 123.075 (CTAF)	122.7
--------------------------------	---------------------------------	--------------



NE-1, 17 APR 2025 to 15 MAY 2025

NE-1, 17 APR 2025 to 15 MAY 2025

ELEV 41	TDZE 41
---------	---------



CATEGORY	A	B	C	D
LNVA MDA	480-1	439 (500-1)		NA
CIRCLING	560-1	519 (600-1)		NA

LIRL Rwy 7-25