

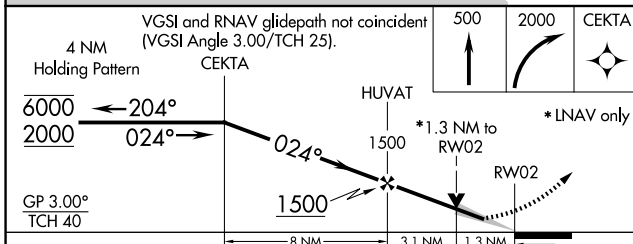
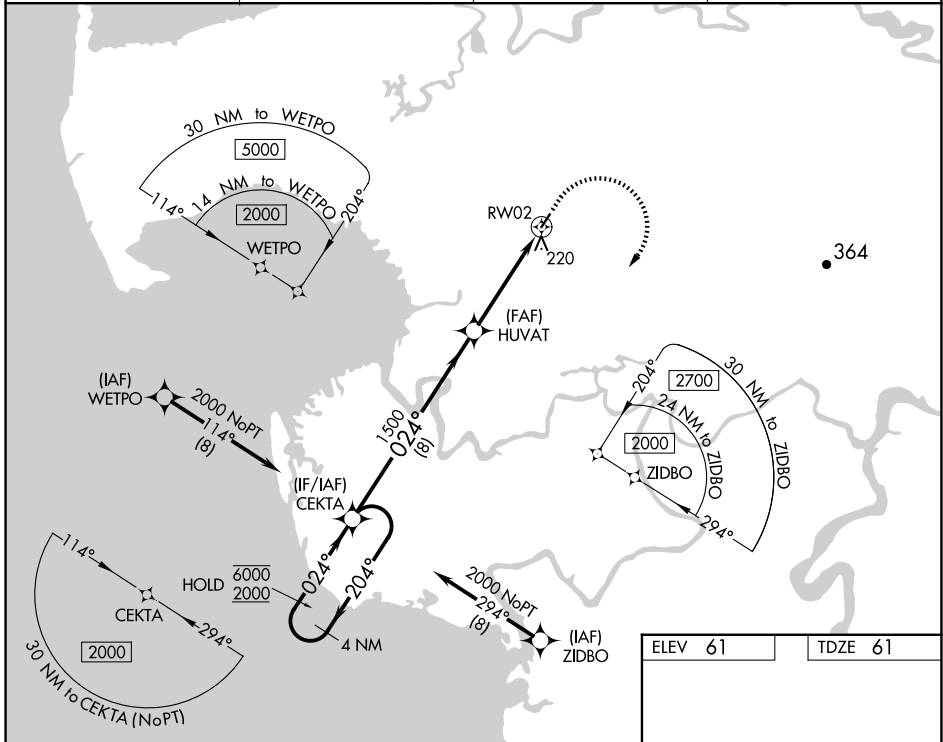
APP CRS	Rwy Idg	3220
024°	TDZE	61
	Apt Elev	61

RNAV (GPS) RWY 2

CHEVAK (VAK)(PAVA)

RNP APCH.	MISSED APPROACH: Climb to 500, then climbing right turn to 2000 direct CEKTA and hold.
For uncompensated Baro-VNAV systems, LNAV/VNAV NA below -22°C or above 54°C.	

AWOS-3P 120.625	ANCHORAGE CENTER 124.5	UNICOM 122.8	CTAF 123.0
---------------------------	----------------------------------	------------------------	----------------------



CATEGORY	A	B	C	D
LNAV/VNAV DA	381-1		320 (400-1)	
LNAV MDA	480-1	419 (500-1)	480-1½	419 (500-1½)
CIRCLING	520-1	459 (500-1)	520-1½ 459 (500-1½)	700-2 639 (700-2)

ELEV 61	TDZE 61
---------	---------

MRL Rwy 2-20
REIL Rwy 2 and 20

AK, 17 APR 2025 to 12 JUN 2025

AK, 17 APR 2025 to 12 JUN 2025