

APP CRS	Rwy Idg	<b>3800</b>
<b>254°</b>	TDZE	<b>623</b>
	Apt Elev	<b>624</b>

# RNAV (GPS) RWY 25

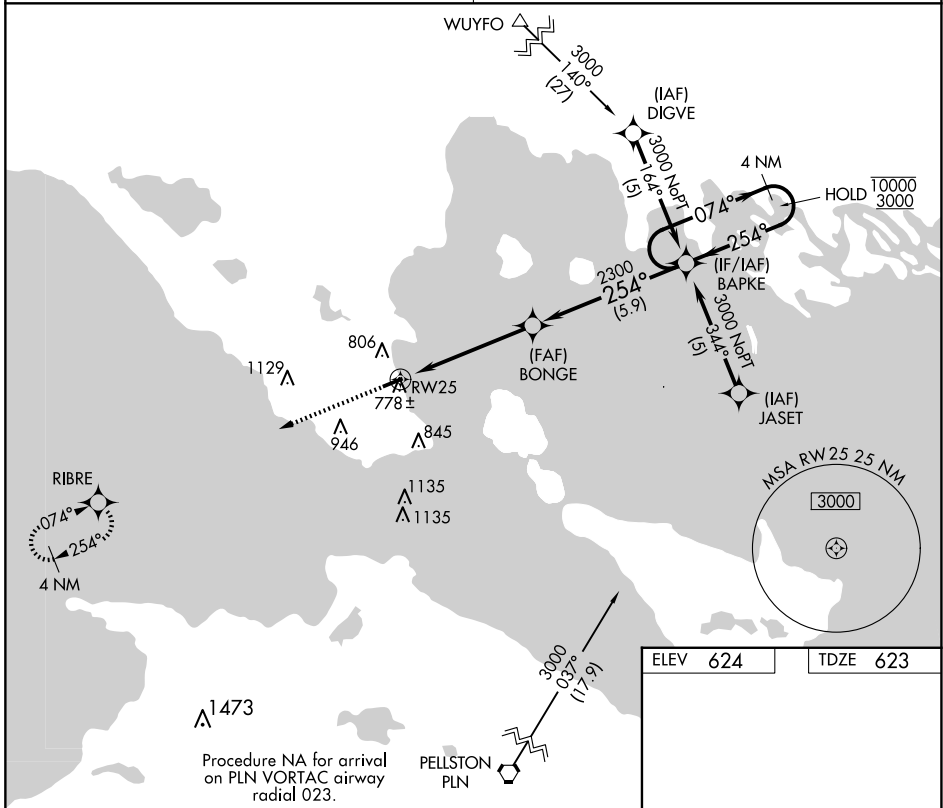
MACKINAC COUNTY (83D)

RNP APCH. Circling Rwy 7 NA at night.  
 Circling NA at night south of Rwy 7-25.  
 Rwy 25 helicopter visibility reduction below ¾ SM NA.

MISSED APPROACH: Climb to 3000 direct RIBRE and hold.

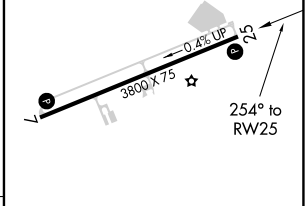
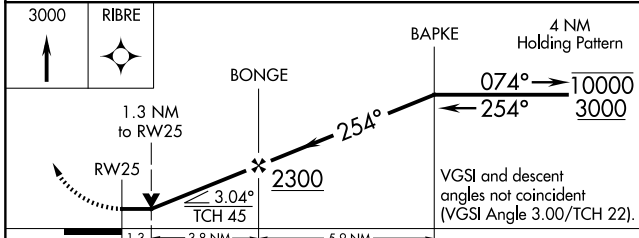
MINNEAPOLIS CENTER  
**134.6 354.05**

UNICOM  
**122.7 (CTAF) 0**



Procedure NA for arrival on PLN VORTAC airway radial 023.

ELEV	624	TDZE	623
------	-----	------	-----



CATEGORY	A	B	C	D
LNVA MDA	1040-1	417 (500-1)	1040-1½ 417 (500-1½)	NA
CIRCLING	1260-1	636 (700-1)	1300-2 676 (700-2)	NA

MIRL Rwy 7-25 0  
 REIL Rwy 7 and 25 0

EC-1, 17 APR 2025 to 15 MAY 2025

EC-1, 17 APR 2025 to 15 MAY 2025