

APP CRS	Rwy Idg	3800
074°	TDZE	624
	Apt Elev	624

RNAV (GPS) RWY 7

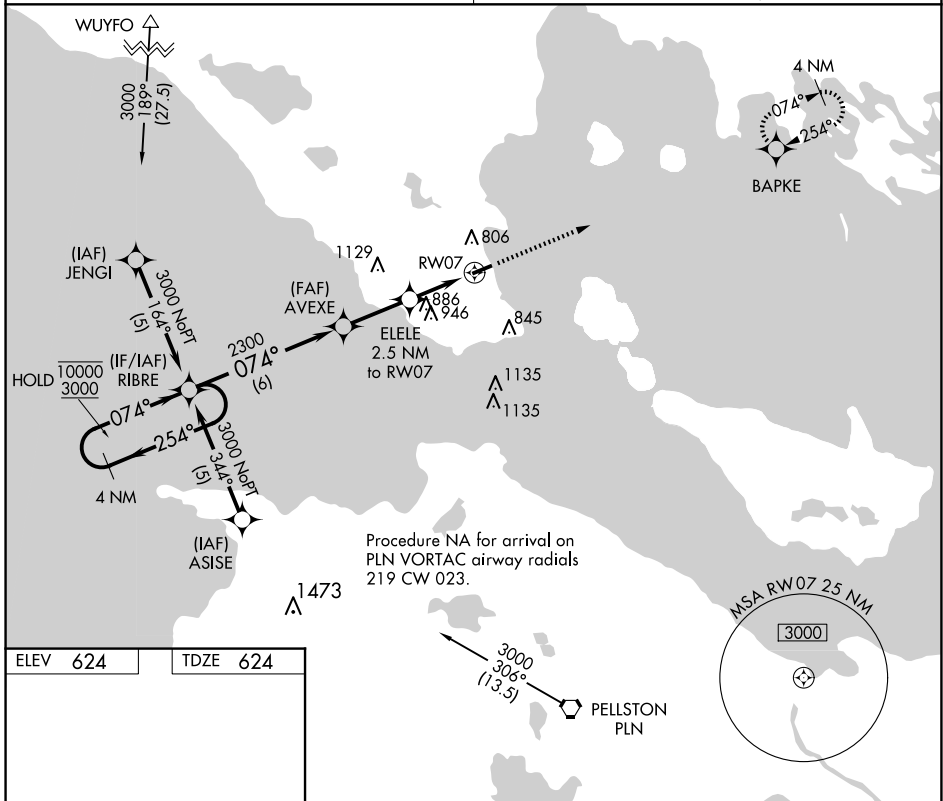
MACKINAC COUNTY (83D)

RNP APCH.
 ▼ Straight-in Rwy 07 NA at night, Circling Rwy 07 NA at night.
 ▲ NA Rwy 07 helicopter visibility reduction below 1 SM NA.
 Circling NA at night south of Rwy 07-25.

MISSED APPROACH: Climb to 3000 direct BAPKE and hold.

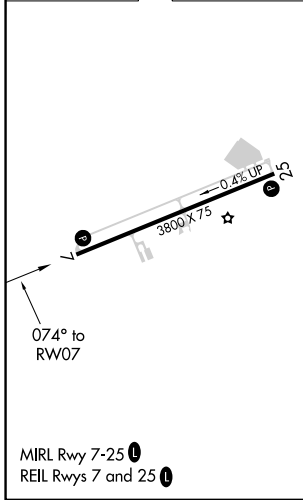
MINNEAPOLIS CENTER
134.6 354.05

UNICOM
122.7 (CTAF) 0



Procedure NA for arrival on
 PLN VORTAC airway radials
 219 CW 023.

ELEV	624	TDZE	624
------	-----	------	-----



4 NM Holding Pattern	RIBRE	Visual Segment - Obstacles.	3000	BAPKE
10000 3000	← 254°	AVEXE	↑	✦
	→ 074°	ELELE 2.5 NM to RW07		
		2300		
		1460		
		6 NM	2.6 NM	2.5 NM
CATEGORY	A	B	C	D
LNAV MDA	1200-1	576 (600-1)	1200-1½ 576 (600-1½)	NA
CIRCLING	1260-1	636 (700-1)	1300-2 676 (700-2)	NA

EC-1, 17 APR 2025 to 15 MAY 2025

EC-1, 17 APR 2025 to 15 MAY 2025