

WAAS CH <b>70528</b> <b>W09A</b>	APP CRS <b>094°</b>	Rwy Idg TDZE Apt Elev	<b>5002</b> <b>357</b> <b>359</b>
----------------------------------------	------------------------	-----------------------------	-----------------------------------------

# RNAV (GPS) RWY 9

HEADLAND MUNI (HDL)

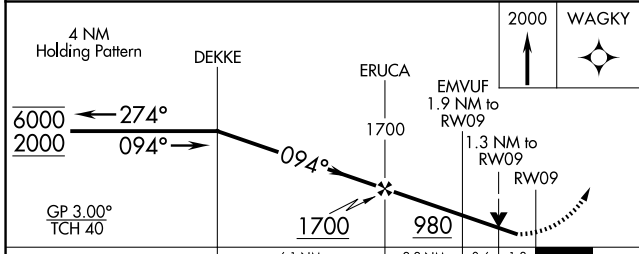
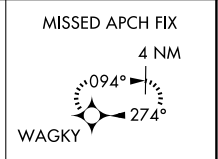
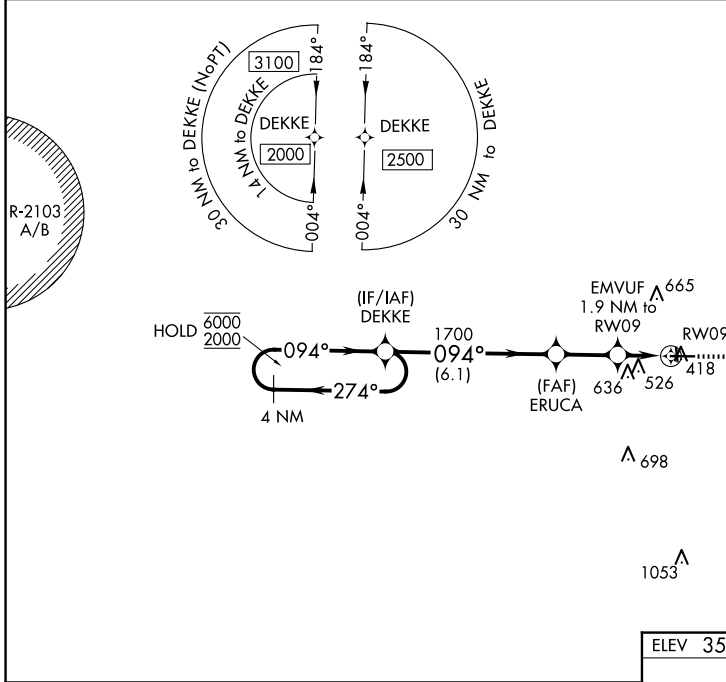
RNP APCH - GPS.  
 ⚠ Circling NA to Rwy 17 and 35. Circling Rwy 27 NA at night.  
 ⚠ Rwy 9 helicopter visibility reduction below 3/4 SM NA.

MISSED APPROACH: Climb to 2000 direct WAGKY and hold.

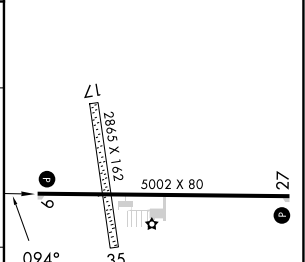
AWOS-3PT  
**119.575**

CAIRNS APP CON ★  
**125.4**

CTAF  
**122.90**



ELEV 359	TDZE 357
----------	----------



CATEGORY	A	B	C	D
LPV DA	631-1 274 (300-1)			NA
LNAV/DA	810-1 <sup>3</sup> / <sub>8</sub> 453 (500-1 <sup>3</sup> / <sub>8</sub> )			NA
LNAV MDA	800-1 443 (500-1)		800-1 <sup>3</sup> / <sub>8</sub> 443 (500-1 <sup>3</sup> / <sub>8</sub> )	NA
CIRCLING	860-1 501 (600-1)	940-1 581 (600-1)	980-1 <sup>3</sup> / <sub>4</sub> 621 (700-1 <sup>3</sup> / <sub>4</sub> )	NA

MIRL Rwy 9-27  
 REIL Rwy 9 and 27

SE-4, 17 APR 2025 to 15 MAY 2025

SE-4, 17 APR 2025 to 15 MAY 2025