

APP CRS 092°	Rwy Idg TDZE Apt Elev	N/A N/A 200
------------------------	-----------------------------	----------------------------------------

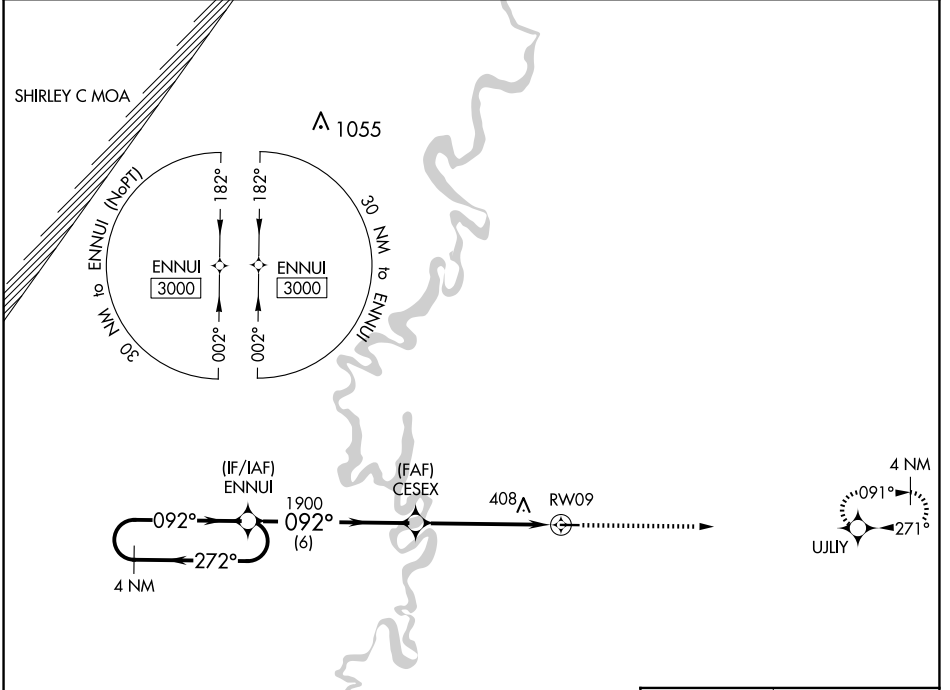
RNAV (GPS)-A

WOODRUFF COUNTY (M64)

NA Rwy 9, 27 helicopter visibility reduction below 1 SM NA. DME/DME RNP-0.3 NA. Procedure NA at night. Use Newport altimeter setting.

MISSED APPROACH: Climb to 3000 direct UJLY and hold.

M19 AWOS-3PT 118.15	MEMPHIS CENTER 135.3 335.8	CTAF 122.9 0
-------------------------------	--------------------------------------	------------------------



ELEV	200
------	-----



4 NM Holding Pattern	ENNUJ	Visual Segment - Obstacles.	3000	UJLY
3000	← 272°	→ 092°	↑	☆
	092°	CESEX		092° to RW09
		1900		3797 X.75
				27
	6 NM	5.2 NM		

CATEGORY	A	B	C	D
C CIRCLING	740-1 540 (600-1)	820-1 620 (700-1)	NA	

MIRL Rwy 9-27 **0**

SC-1, 17 APR 2025 to 15 MAY 2025

SC-1, 17 APR 2025 to 15 MAY 2025