

WAAS CH 45610 W16A	APP CRS 165°	Rwy Idg TDZE 79 Apt Elev 79
---------------------------------	------------------------	---

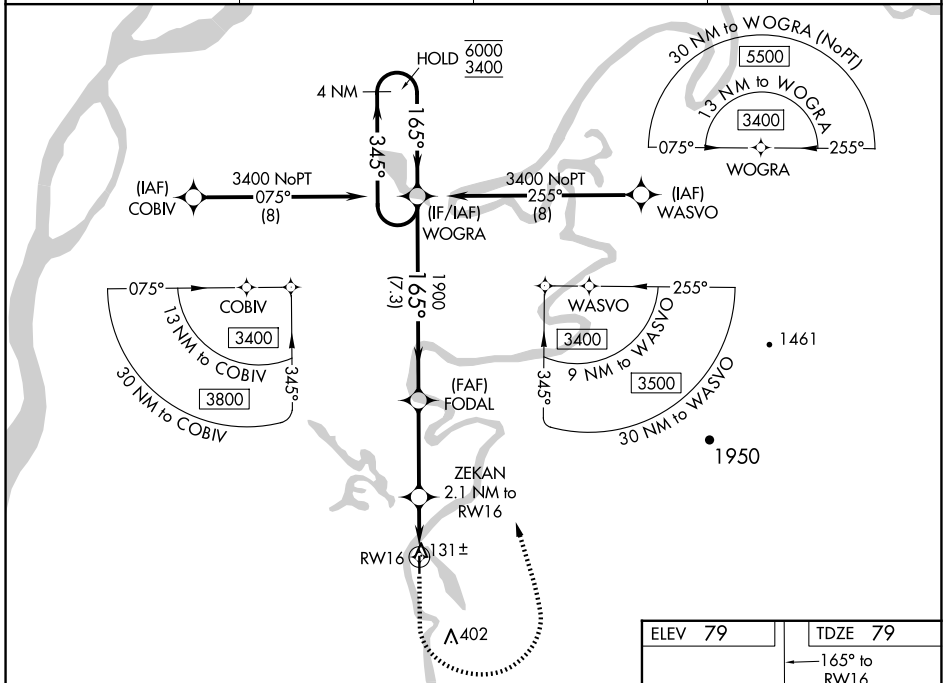
RNAV (GPS) RWY 16

SHAGELUK (SHX) (PAHX)

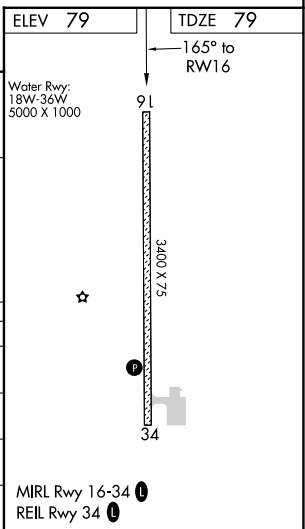
RNP APCH.
 ▼ For uncompensated Baro-VNAV systems, LNAV/VNAV NA below -25°C or above 54°C.
 ▲ Circling NA for Cats C and D east of Rwy 16-34.

MISSED APPROACH: Climb to 1000 then climbing left turn to 3400 direct WOGRA and hold.

AWOS-3P 121.575	ANCHORAGE CENTER 135.7 335.5	KENAI RADIO 122.4	UNICOM 122.8 (CTAF)
---------------------------	--	-----------------------------	-------------------------------



4 NM Holding Pattern 6000 ← 345° 3400 → 165° GP 3.00° TCH 40		WOGRA 1000 3400 WOGRA ZEKAN 2.1 NM to RW16 *LNAV only *800 *1.4 NM to RW16		
7.3 NM 3.5 NM 0.7 1.4 NM		FODAL 1900 RW16 131± ▲ 402		
CATEGORY	A	B	C	D
LPV DA		329-1	250 (300-1)	
LNAV/VNAV DA		329-1	250 (300-1)	
LNAV MDA		400-1	321 (400-1)	
▲ CIRCLING	460-1 381 (400-1)	540-1 461 (500-1)	540-1½ 461 (500-1½)	800-2¼ 721 (800-2¼)



AK, 17 APR 2025 to 12 JUN 2025

AK, 17 APR 2025 to 12 JUN 2025