

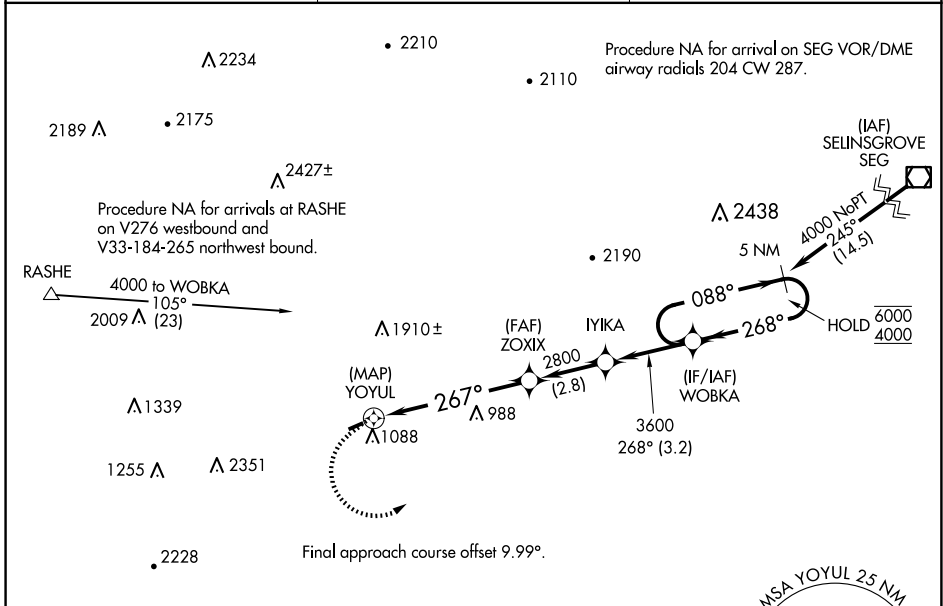
APP CRS <b>267°</b>	Rwy Idg <b>2627</b>
	TDZE <b>545</b>
	Apt Elev <b>545</b>

# RNAV (GPS) RWY 26

MIFFLINTOWN (P34)

RNP APCH - GPS.	<p>▼ Procedure NA at night. Rwy 26 helicopter visibility reduction below 1 SM NA.</p> <p>▲ NA Circling NA north of Rwy 8-26. Use Penn Valley altimeter setting; when not received, use Reedsville altimeter setting and increase all MDAs 240 feet and LNAV visibility Cat B ¼ SM.</p>	MISSED APPROACH: Climbing left turn to 4000 direct WOBKA and hold, continue climb-in-hold to 4000.
-----------------	--	--

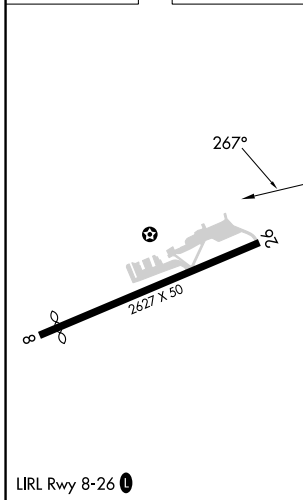
SEG ASOS <b>123.975</b>	NEW YORK APP CON <b>134.8 338.3</b>	UNICOM <b>122.8 (CTAF)</b>
----------------------------	--	-------------------------------



NE-4, 17 APR 2025 to 15 MAY 2025

NE-4, 17 APR 2025 to 15 MAY 2025

ELEV 545	TDZE 545
----------	----------



	4000	WOBKA	5 NM	WOBKA	5 NM	Holding Pattern
		(MAP) YOYUL	ZOXIX	IYIKA	WOBKA	
		267°	2800	3600	268°	6000 / 4000
		3.38° TCH 35			088°	
		267°	2.8 NM	3.2 NM	268°	
CATEGORY	A	B	C	D		
LNAV MDA	1440-1¼	895 (900-1¼)			NA	
CIRCLING	1560-1¼ 1015 (1100-1¼)	2080-1½ 1535 (1600-1½)			NA	