

APP CRS	Rwy Idg	4206
097°	TDZE	240
	Apt Elev	251

RNAV (GPS) RWY 10

BIBB COUNTY (ØA8)

RNP APCH.

▽ Rwy 10 helicopter visibility reduction below 1 SM NA. Use Tuscaloosa altimeter setting; when not received, use Alabaster altimeter setting and increase all MDAs 20 feet. Procedure NA at night.

△ NA

MISSED APPROACH: Climb to 3000 direct CAMUV and hold.

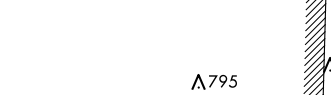
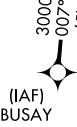
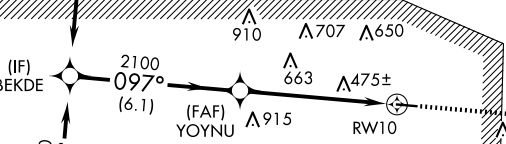
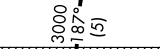
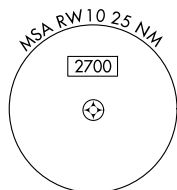
TCL ASOS
132.825

ATLANTA CENTER
132.25 263.025

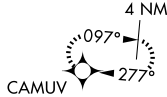
UNICOM
122.975 (CTAF) 0

BROOKWOOD
OKW

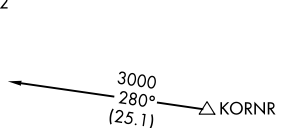
Procedure NA for arrivals at OKW
VORTAC on V209 northeast bound.



△ 873



△ 888

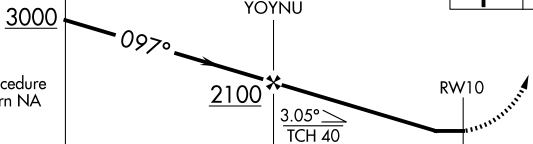
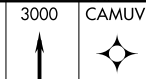


BIRMINGHAM
AND BIRMINGHAM 2
MOA

ELEV	251	TDZE	240
------	-----	------	-----

BEKDE

VGSI and descent angles not coincident
(VGSI Angle 4.00/TCH 40).



6.1 NM 5.6 NM

CATEGORY	A	B	C	D
LNAV MDA	960-1	720 (800-1)	960-2 720 (800-2)	NA

MIRL Rwy 10-28
REIL Rwy 10 and 28

SE-4, 17 APR 2025 to 15 MAY 2025

SE-4, 17 APR 2025 to 15 MAY 2025