

WAAS CH <b>99533</b> <b>W21A</b>	APP CRS <b>213°</b>	Rwy Idg TDZE Apt Elev	<b>5001</b> <b>3705</b> <b>3705</b>
--	------------------------	-----------------------------	---

# RNAV (GPS) RWY 21

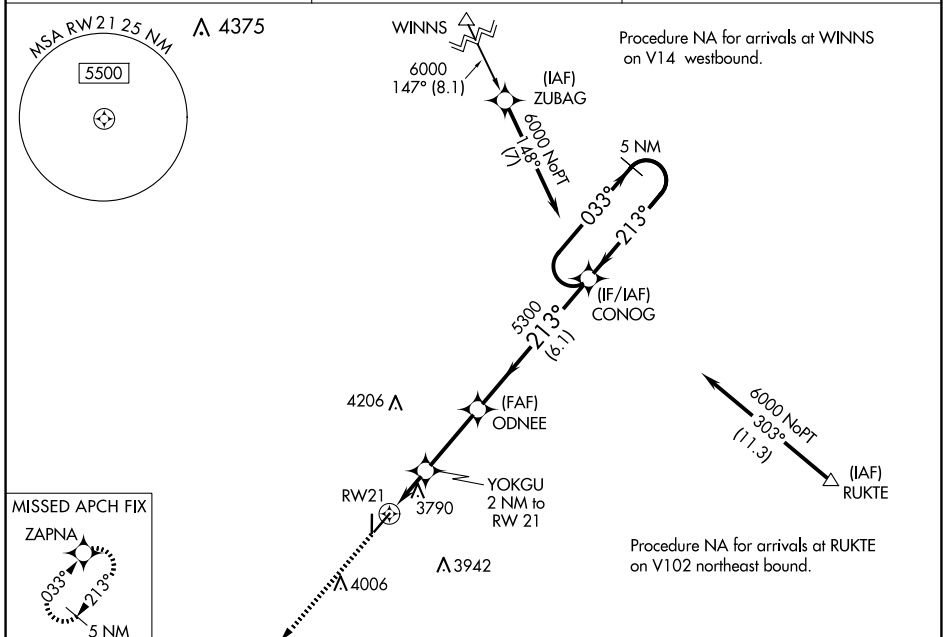
YOAKUM COUNTY (F98)

RNP APCH-GPS.

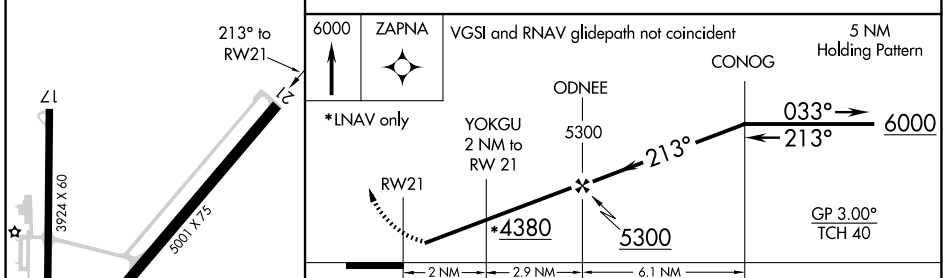
**NA** Baro-VNAV NA. Use Hobbs altimeter setting; when not received, use Seminole altimeter setting; increase LPV and LNAV/VNAV DA to 4088 and Cats A/B visibility to 1 1/8 mile; increase all MDAS 60 feet. Helicopter Visibility reduction below 3/4 SM NA.

MISSED APPROACH: Climb to 6000 direct ZAPNA and hold.

HOB AWOS-3 <b>119.75</b>	FORT WORTH CENTER <b>132.6 269.05</b>	CTAF <b>122.9 0</b>
-----------------------------	--	------------------------



ELEV 3705	TDZE 3705
-----------	-----------



CATEGORY	A	B	C	D
LPV DA	4047-1 1/8	342 (400-1 1/8)		NA
LNAV/VNAV DA	4047-1 1/8	342 (400-1 1/8)		NA
LNAV MDA	4140-1	435 (500-1)		NA
<b>C</b> CIRCLING	4200-1 495 (500-1)	4260-1 555 (600-1)		NA

MIRL Rwy 3-21 and Rwy 17-35 **0**

SC-2, 17 APR 2025 to 15 MAY 2025

SC-2, 17 APR 2025 to 15 MAY 2025