

WAAS CH <b>86334</b> <b>W03A</b>	APP CRS <b>033°</b>	Rwy Idg <b>5001</b> TDZE <b>3684</b> Apt Elev <b>3705</b>
--	------------------------	---

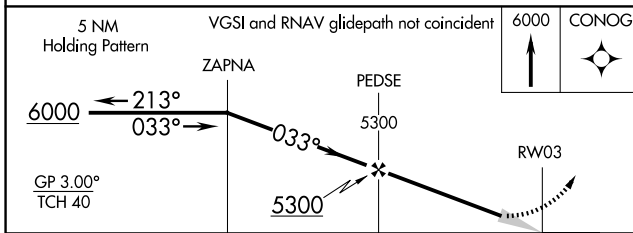
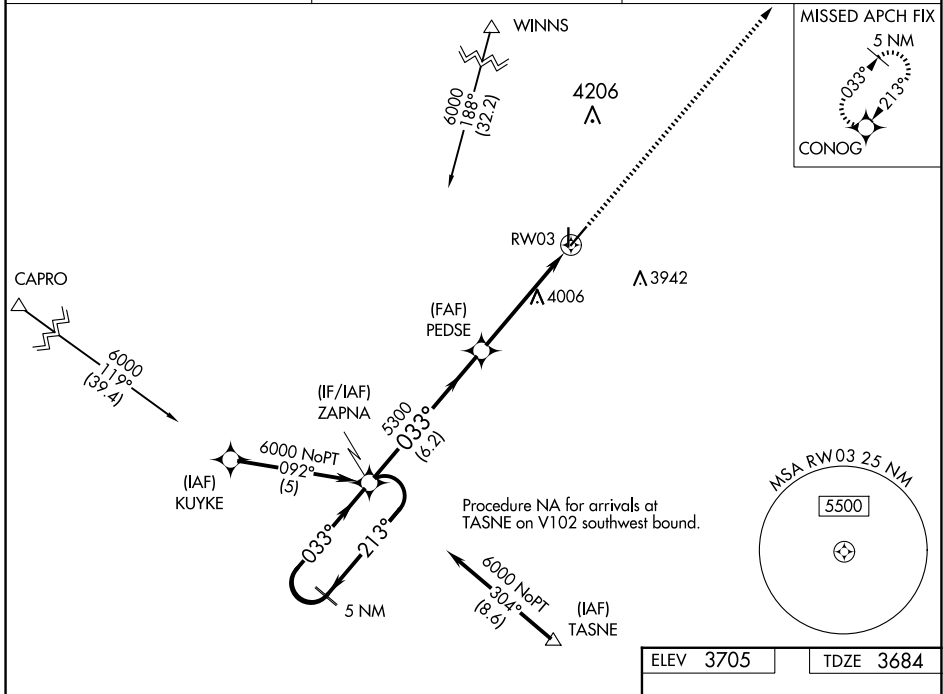
# RNAV (GPS) RWY 3

YOAKUM COUNTY (F98)

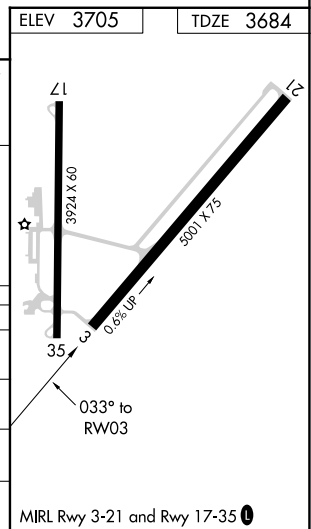
**Baro-VNAV NA. DME/DME RNP-0.3 NA. Use Hobbs altimeter setting, when not received, use Seminole altimeter setting and increase all DA 41 feet and all MDA 60 feet, increase LPV Cats A/B visibility to 1/4 mile, LNAV/VNAV Cat A/B to 1/2 mile, LNAV and Circling Cat B to 1/4 mile.**

**MISSED APPROACH:** Climb to 6000 direct CONOG and hold.

HOB AWOS-3 <b>119.75</b>	FORT WORTH CENTER <b>132.6 269.05</b>	CTAF <b>122.9</b>
-----------------------------	--	----------------------



CATEGORY	A	B	C	D
LPV DA	4026-1 1/8	342 (400-1 1/8)		NA
LNAV/VNAV DA	4073-1 3/8	389 (400-1 3/8)		NA
LNAV MDA	4400-1	716 (700-1)		NA
<b>C</b> CIRCLING	4400-1	695 (700-1)		NA



SC-2, 17 APR 2025 to 15 MAY 2025

SC-2, 17 APR 2025 to 15 MAY 2025