

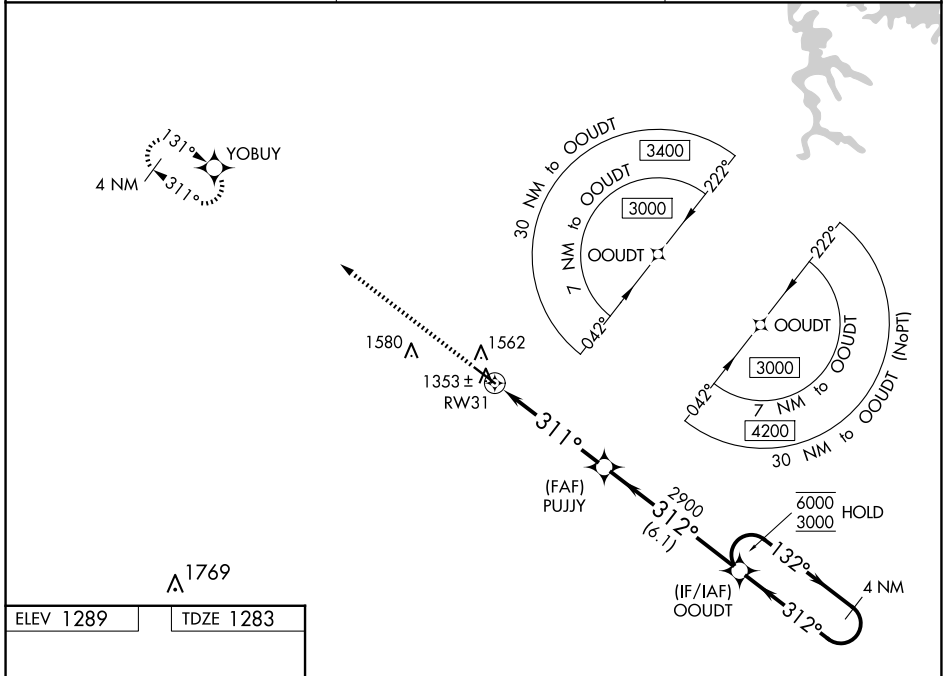
WAAS CH 99511 W31A	APP CRS 311°	Rwy Idg TDZE 1283 Apt Elev 1289	5505 1283 1289
--	------------------------	---	---

RNAV (GPS) RWY 31

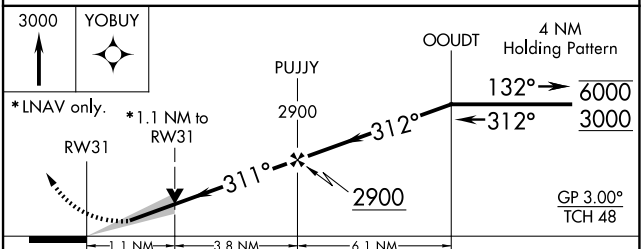
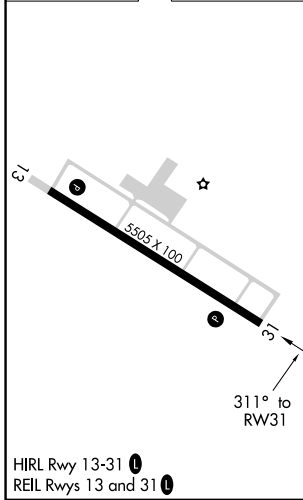
PAULDING NORTHWEST ATLANTA (PUJ)

RNP APCH.	MISSED APPROACH: Climb to 3000 direct YOBUY and hold.
<p>▼</p> <p>▲ For uncompensated Baro-VNAV systems, LNAV/VNAV NA below -17°C or above 54°C.</p>	

AWOS-3 126.225	ATLANTA APP CON 121.0 268.7	UNICOM 123.075 (CTAF)
--------------------------	---------------------------------------	---------------------------------



ELEV 1289	TDZE 1283
-----------	-----------



CATEGORY	A	B	C	D
LPV DA	1483- ³ / ₄ 200 (200- ³ / ₄)			
LNAV/VNAV DA	1582- ⁷ / ₈ 299 (300- ⁷ / ₈)			
LNAV MDA	1680-1	397 (400-1)	1680-1 ¹ / ₈	397 (400-1 ¹ / ₈)
C CIRCLING	1880-1	591 (600-1)	1940-1 ³ / ₄ 651 (700-1 ³ / ₄)	1940-2 651 (700-2)

SE-4, 17 APR 2025 to 15 MAY 2025

SE-4, 17 APR 2025 to 15 MAY 2025