

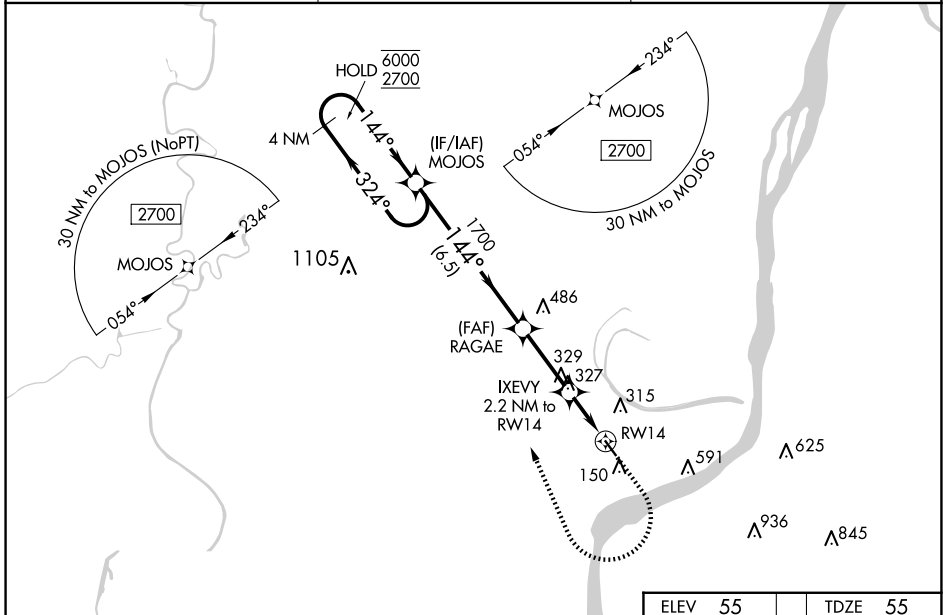
WAAS CH 78337 W14A	APP CRS 144°	Rwy Idg TDZE Apt Elev	3701 55 55
--	------------------------	-----------------------------	---------------------------------------

RNAV (GPS) RWY 14

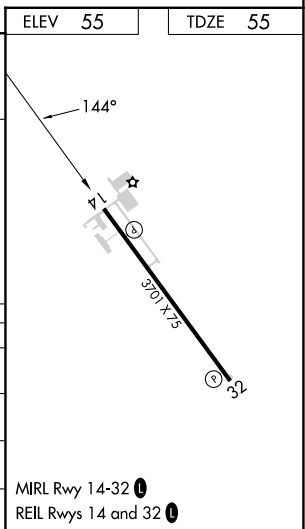
CONCORDIA PARISH (ØR4)

RNP APCH - GPS.	<p>MISSED APPROACH: Climb to 1000 then climbing right turn to 3000 direct MOJOS and hold.</p>
<p>⚠ Rwy 14 helicopter visibility reduction below ¼ SM NA. For uncompensated Baro-VNAV systems, LNAV/VNAV NA below -15°C or above 54°C. When local altimeter setting not received, use Natchez altimeter setting and increase LPV DA to 408 feet; increase LNAV/VNAV DA to 540 feet and all visibilities ½ SM; increase all MDAs 60 feet and LNAV visibility Cat C ¼ SM, and Circling visibility Cat C ¼ SM. Baro-VNAV and VDP NA when using Natchez altimeter setting.</p>	

AWOS-3 118.2	HOUSTON CENTER 120.975 299.6	UNICOM 122.8 (CTAF) 0
------------------------	--	---------------------------------



4 NM Holding Pattern		MOJOS		RAGAE		IXEVY		RWY 14	
6000 ← 324°		2700 → 144°		1700		800		150	
GP 3.00°		TCH 51		1700		800		150	
6.5 NM		2.8 NM		0.7 NM		1.5 NM			
CATEGORY	A	B	C	D					
LPV DA	352-1 297 (300-1)		NA						
LNAV/VNAV DA	484-1¼ 429 (500-1¼)		NA						
LNAV MDA	580-1	525 (600-1)	580-1½ 525 (600-1½)		NA				
CIRCLING	680-1	625 (700-1)	960-2¾ 905 (1000-2¾)		NA				



MIRL Rwy 14-32 0
REIL Rwy 14 and 32 0

SC-4, 17 APR 2025 to 15 MAY 2025

SC-4, 17 APR 2025 to 15 MAY 2025