

WAAS CH <b>93939</b> <b>W32A</b>	APP CRS <b>326°</b>	Rwy Idg TDZE Apt Elev	<b>3397</b> <b>1232</b> <b>1240</b>
--	------------------------	-----------------------------	---

# RNAV (GPS) RWY 32

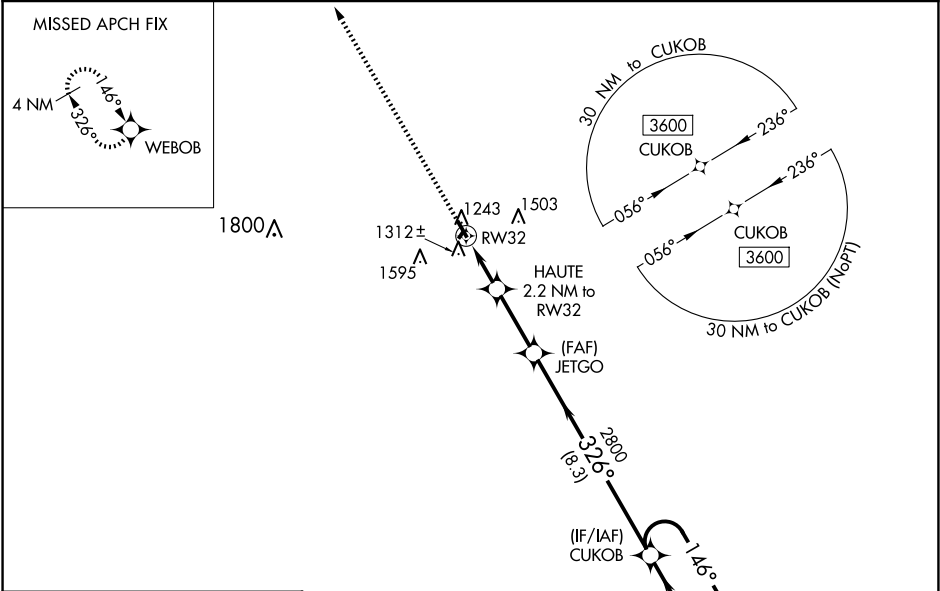
LISBON MUNI (6L3)

RNP APCH - GPS.

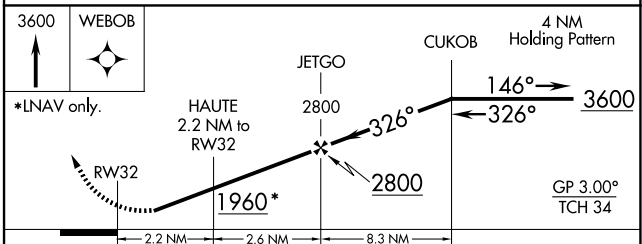
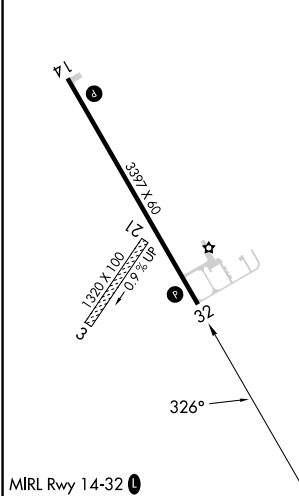
▼ Circling NA to Rwy 3 and 21. Baro-VNAV NA. Circling Rwy 14 NA at night.  
 ▲ NA Rwy 32 helicopter visibility reduction below ¼ SM NA. Use Gwinner altimeter setting; when not received, use Valley City altimeter setting and increase LPV DA to 1580 feet; increase LNAV/VNAV DA to 1619 feet and all visibilities ½ SM. Increase all MDAs 80 feet.

MISSED APPROACH: Climb to 3600 direct WEBOB and hold.

GWR AWOS-3 <b>118.325</b>	MINNEAPOLIS CENTER <b>127.35 278.3</b>	CTAF <b>122.9</b>
------------------------------	---	----------------------



ELEV 1240	TDZE 1232
-----------	-----------



CATEGORY	A	B	C	D
LPV DA	1519-1	287 (300-1)		NA
LNAV/VNAV DA	1558-1	326 (400-1)		NA
LNAV MDA	1660-1	428 (500-1)		NA
<input checked="" type="checkbox"/> CIRCLING	1740-1 500 (500-1)	1940-1 700 (700-1)		NA

NC-1, 17 APR 2025 to 15 MAY 2025

NC-1, 17 APR 2025 to 15 MAY 2025