

WAAS CH 50538 W16A	APP CRS 164°	Rwy ldg 3400 TDZE 1162 Apt Elev 1162
--	------------------------	---

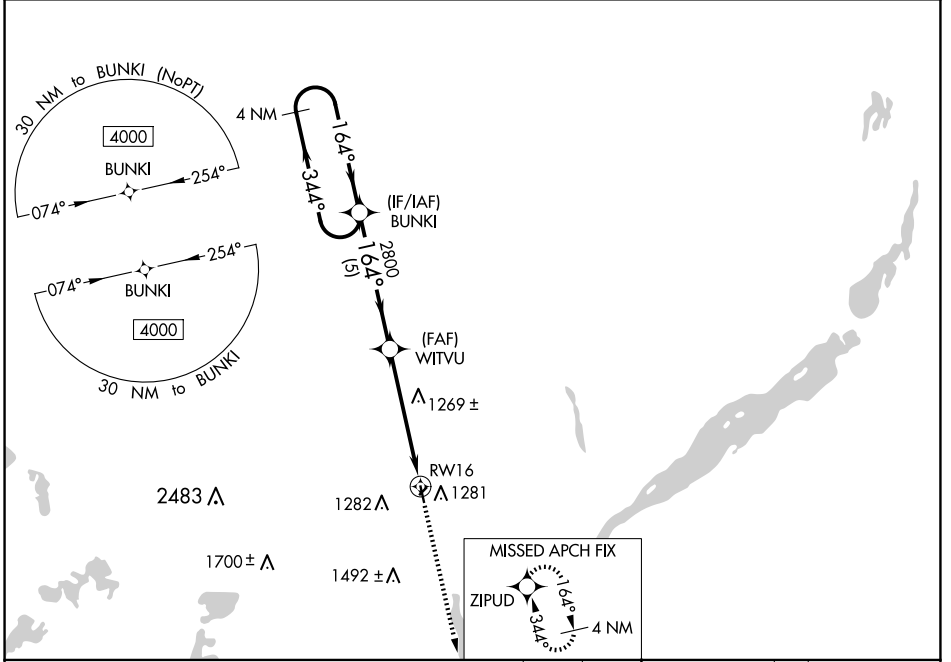
RNAV (GPS) RWY 16

SISSETON MUNI (8D3)

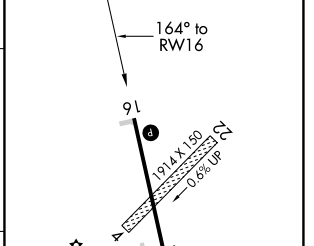
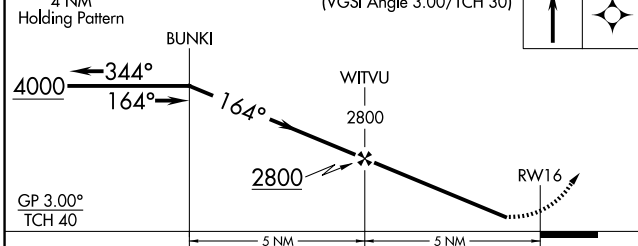
▼ Circling NA to Rwys 4 and 22. Baro-VNAV NA. DME/DME RNP-0.3 NA. Helicopter visibility reduction below 3/4 SM NA. Use Wheaton altimeter setting; when not received, use Ortonville altimeter setting and increase LPV DA to 1496 feet, LNAV/VNAV DA to 1516 feet and all MDA 20 feet. Increase LNAV/VNAV Cats A/B visibility 1/8 mile.

▲ NA MISSED APPROACH: Climb to 4000 direct ZIPUD and hold, continue climb-in-hold to 4000.

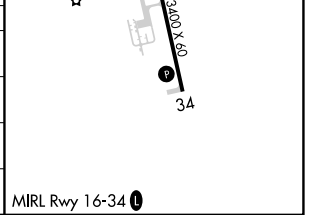
ETH AWOS-3 118.775	MINNEAPOLIS CENTER 128.5 306.2	CTAF 122.90
------------------------------	--	-----------------------



4 NM Holding Pattern	VGSI and RNAV glidepath not coincident (VGSI Angle 3.00/TCH 30)	4000 ZIPUD	ELEV 1162	TDZE 1162
----------------------	---	------------	-----------	-----------



CATEGORY	A	B	C	D
LPV DA	1478-1 1/8	316 (400-1 1/8)		NA
LNAV/VNAV DA	1498-1 1/8	336 (400-1 1/8)		NA
LNAV MDA	1600-1	438 (500-1)		NA
C CIRCLING	1660-1 498 (500-1)	1700-1 538 (600-1)		NA



NC-1, 17 APR 2025 to 15 MAY 2025

NC-1, 17 APR 2025 to 15 MAY 2025